



# Recombinant Human Retinal dehydrogenase 2 (ALDH1A2)

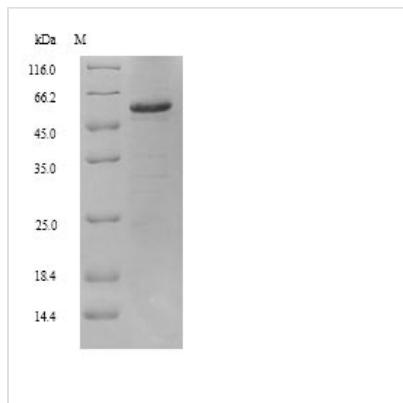
<b>Product Code</b>	CSB-YP001566HU
<b>Relevance</b>	Recognizes as substrates free retinal and cellular retinol-binding protein-bound retinal. Does metabolize octanal and decanal but does not metabolize citral, benzaldehyde, acetaldehyde and propanal efficiently
<b>Abbreviation</b>	Recombinant Human ALDH1A2 protein
<b>Storage</b>	The shelf life is related to many factors, storage state, buffer ingredients, storage temperature and the stability of the protein itself. Generally, the shelf life of liquid form is 6 months at -20°C/-80°C. The shelf life of lyophilized form is 12 months at -20°C/-80°C.
<b>Uniprot No.</b>	O94788
<b>Alias</b>	Aldehyde dehydrogenase family 1 member A2 Retinaldehyde-specific dehydrogenase type 2 Short name: RALDH(II)
<b>Product Type</b>	Recombinant Protein
<b>Immunogen Species</b>	Homo sapiens (Human)
<b>Purity</b>	≥ 90% as determined by SDS-PAGE.
<b>Sequence</b>	MTSSKIEMPGEVKADPAALMASLHLLPSPTPNLEIKYTKIFINNEWQNSEGRV FPVYNPATGEQVCEVQEADKADIDKAVQAARLAFSLGSVWRRMDASERGRLL DKLADLVERDRAVLATMESLNGGKPFLLQAFYVDLQGVIKTFRYYAGWADKIHG MTIPVDGDYFTFTRHEPIGVCGQIIPWNFPLLMFAWKIAPALCCGNTVVIKPAE QTPLSALYMGALIKEAGFPPGVINILPGYGPTAGAAIASHIGIDKIAFTGSTEVGK LIQEAAGRSNLKRVTLLELGGKSPNIIFADADLDYAVEQAHQGVFFNQGCCTA GSRIFVEESIYEEFVRRSVERAKRRVVGSPFDPTTEQGPQIDKKQYNKILELIQS GVAEGAKLECGGKGLGRKGFIEPTVFSNVTDMMRIAKEEIFGPVQEILRFKTM DEVIERANNSDFGLVAAVFTNDINKALTVSSAMQAGTVWINCYNALNAQSPFG GFKMSGNGREMGEFGLREYSEVKTVTVKIPQKNS
<b>Research Area</b>	Neuroscience
<b>Source</b>	Yeast
<b>Target Names</b>	ALDH1A2
<b>Protein Names</b>	Recommended name: Retinal dehydrogenase 2 Short name= RALDH 2 Short name= RalDH2 EC= 1.2.1.36 Alternative name(s): Aldehyde dehydrogenase family 1 member A2 Retinaldehyde-specific dehydrogenase type 2 Short name= RALDH(II)
<b>Expression Region</b>	1-518aa
<b>Notes</b>	Repeated freezing and thawing is not recommended. Store working aliquots at 4°C for up to one week.
<b>Tag Info</b>	N-terminal 6xHis-tagged



**Mol. Weight** 58.7kDa

**Protein Length** Full Length

**Image**



(Tris-Glycine gel) Discontinuous SDS-PAGE (reduced) with 5% enrichment gel and 15% separation gel.

**Reconstitution**

We recommend that this vial be briefly centrifuged prior to opening to bring the contents to the bottom. Please reconstitute protein in deionized sterile water to a concentration of 0.1-1.0 mg/mL. We recommend to add 5-50% of glycerol (final concentration) and aliquot for long-term storage at -20°C/-80°C. Our default final concentration of glycerol is 50%. Customers could use it as reference.

**Shelf Life**

The shelf life is related to many factors, storage state, buffer ingredients, storage temperature and the stability of the protein itself. Generally, the shelf life of liquid form is 6 months at -20°C/-80°C. The shelf life of lyophilized form is 12 months at -20°C/-80°C.