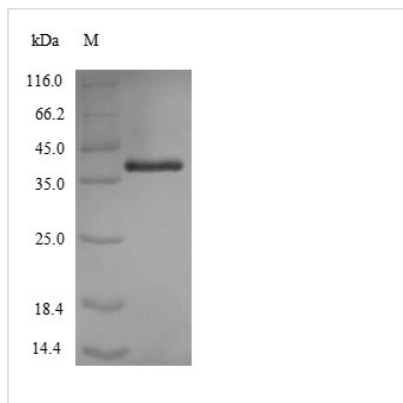




Recombinant *Acinetobacter baumannii* Outer membrane protein Omp38 (omp38)

Product Code	CSB-YP387720AUD
Relevance	Porin. Induces apoptosis in human cells through caspases-dependent and AIF-dependent pathways. Purified Omp38 enters the cells and localizes to the mitochondria, which leads to a release of proapoptotic molecules such as cytochrome c and AIF (apoptosis-inducing factor) (By similarity).
Abbreviation	Recombinant <i>Acinetobacter baumannii</i> omp38 protein
Storage	The shelf life is related to many factors, storage state, buffer ingredients, storage temperature and the stability of the protein itself. Generally, the shelf life of liquid form is 6 months at -20°C/-80°C. The shelf life of lyophilized form is 12 months at -20°C/-80°C.
Uniprot No.	A3M8K2
Product Type	Recombinant Protein
Immunogen Species	<i>Acinetobacter baumannii</i> (strain ATCC 17978 / CIP 53.77 / LMG 1025 / NCDC KC755 / 5377)
Purity	Greater than 90% as determined by SDS-PAGE.
Sequence	ANAGVTVTPLLLGYTFQDSQHNNGGKDGNTNGPELQDDLFGAALGIELTP WLGFEAEYNQVKGDVDGASAGAEYKQKQINGNFYVTSDLITKNYDSKIKPYVL LGAGHYKYDFDGVNRGTRGTSEEGTLGNAGVGAFWRLNDALSLRTEARATY NADEEFWNYTALAGLNVLGGHLKPAAPVVEVAPVEPTPVTPQPQELTEDLN MELRVFFDTNKSNIKDQYKPEIAKVAEKLSEYPNATARIEGHTDNTGPRKLNER LSLARANSVKSALVNEYNVNDASRLSTQGFAWDQPIADNKTKEGRAMNRRVFA TITGSRTVVVQPGQEAAAAPAAAQ
Research Area	Others
Source	Yeast
Target Names	omp38
Protein Names	Recommended name: Outer membrane protein Omp38
Expression Region	20-356aa
Notes	Repeated freezing and thawing is not recommended. Store working aliquots at 4°C for up to one week.
Tag Info	N-terminal 6xHis-tagged
Mol. Weight	38.5kDa
Protein Length	Full Length of Mature Protein
Image	



(Tris-Glycine gel) Discontinuous SDS-PAGE (reduced) with 5% enrichment gel and 15% separation gel.

Reconstitution

We recommend that this vial be briefly centrifuged prior to opening to bring the contents to the bottom. Please reconstitute protein in deionized sterile water to a concentration of 0.1-1.0 mg/mL. We recommend to add 5-50% of glycerol (final concentration) and aliquot for long-term storage at $-20^{\circ}\text{C}/-80^{\circ}\text{C}$. Our default final concentration of glycerol is 50%. Customers could use it as reference.

Shelf Life

The shelf life is related to many factors, storage state, buffer ingredients, storage temperature and the stability of the protein itself. Generally, the shelf life of liquid form is 6 months at $-20^{\circ}\text{C}/-80^{\circ}\text{C}$. The shelf life of lyophilized form is 12 months at $-20^{\circ}\text{C}/-80^{\circ}\text{C}$.