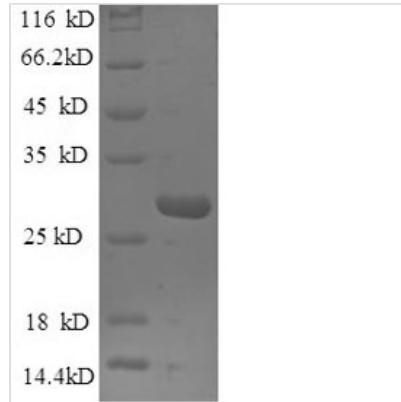




Recombinant Human Mannose-binding protein C (MBL2)

Product Code	CSB-YP013540HU
Relevance	Calcium-dependent lectin involved in innate immune defense. Binds mannose, fucose and N-acetylglucosamine on different microorganisms and activates the lectin complement pathway. Binds to late apoptotic cells, as well as to apoptotic blebs and to necrotic cells, but not to early apoptotic cells, facilitating their uptake by macrophages. May bind DNA.
Abbreviation	Recombinant Human MBL2 protein
Storage	The shelf life is related to many factors, storage state, buffer ingredients, storage temperature and the stability of the protein itself. Generally, the shelf life of liquid form is 6 months at -20°C/-80°C. The shelf life of lyophilized form is 12 months at -20°C/-80°C.
Uniprot No.	P11226
Alias	Collectin-1MBP1Mannan-binding protein;Mannose-binding lectin
Product Type	Recombinant Protein
Immunogen Species	Homo sapiens (Human)
Purity	Greater than 90% as determined by SDS-PAGE.
Sequence	ETVTCEDAQKTCPAVIACSSPGINGFPGKDGRDGTKGEKGEPGQGLRGLQGP PGKLGPPGNPGPSGSPGPKGQKGDGPKSPDGDSSLAASERKALQTEMARIK KWLTFSLGKQVGNKFFLTNGEIMTFEKVKALCVKFQASVATPRNAAENGAIQN LIKEAFLGITDEKTEGQFVDLTGNRLTYTNWNEGEPNNAGSDEDVLLLLKNG QWNDVPCSTSHLAVCEFP
Research Area	Immunology
Source	Yeast
Target Names	MBL2
Protein Names	Recommended name: Mannose-binding protein C Short name= MBP-C Alternative name(s): Collectin-1 MBP1 Mannan-binding protein Mannose-binding lectin
Expression Region	21-248aa
Notes	Repeated freezing and thawing is not recommended. Store working aliquots at 4°C for up to one week.
Tag Info	N-terminal 6xHis-tagged
Mol. Weight	26.0kDa
Protein Length	Full Length of Mature Protein
Image	



(Tris-Glycine gel) Discontinuous SDS-PAGE (reduced) with 5% enrichment gel and 15% separation gel.

Reconstitution

We recommend that this vial be briefly centrifuged prior to opening to bring the contents to the bottom. Please reconstitute protein in deionized sterile water to a concentration of 0.1-1.0 mg/mL. We recommend to add 5-50% of glycerol (final concentration) and aliquot for long-term storage at -20°C/-80°C. Our default final concentration of glycerol is 50%. Customers could use it as reference.

Shelf Life

The shelf life is related to many factors, storage state, buffer ingredients, storage temperature and the stability of the protein itself. Generally, the shelf life of liquid form is 6 months at -20°C/-80°C. The shelf life of lyophilized form is 12 months at -20°C/-80°C.