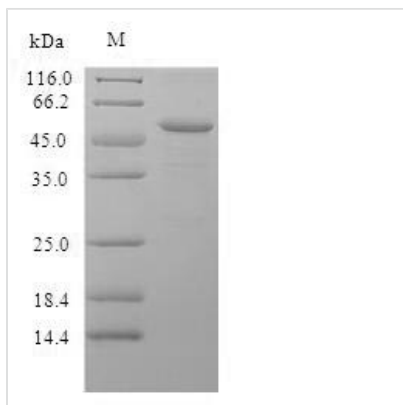


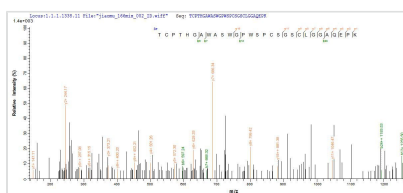


# Recombinant Mouse Properdin (Cfp)

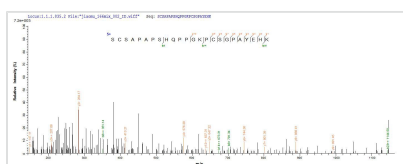
<b>Product Code</b>	CSB-YP005291MO
<b>Relevance</b>	A positive regulator of the alternate pathway of complement. It binds to and stabilizes the C3- and C5-convertase enzyme complexes.
<b>Abbreviation</b>	Recombinant Mouse Cfp protein
<b>Storage</b>	The shelf life is related to many factors, storage state, buffer ingredients, storage temperature and the stability of the protein itself. Generally, the shelf life of liquid form is 6 months at -20°C/-80°C. The shelf life of lyophilized form is 12 months at -20°C/-80°C.
<b>Uniprot No.</b>	P11680
<b>Alias</b>	Complement factor P
<b>Product Type</b>	Recombinant Protein
<b>Immunogen Species</b>	Mus musculus (Mouse)
<b>Purity</b>	Greater than 90% as determined by SDS-PAGE.
<b>Sequence</b>	SDPVLCFTQYEESSGRCKGLLGRDIRVEDCCLNAAYAFQEHDGGLCQACRSP QWSAWSLWGPCSVTCSEGSQRLRHRRCVGRGGQCSENVAPGTLEWQLQAC EDQPCCPEMGGWSEWGPWGPCSVTCSKGTQIRQRVCDNPAPKCGGHCPG EAQQSQACDTQKTCPTHGAWASWGPWSPCSGSLGGAQEPKETRSRSCSA PAPSHQPPGKPCSGPAYEHKACSGLPVAGGWGPWSPSPCSVTCLGLG QTLEQRTCDHPAPRHGGPFCAGDATRNQMCNKAVPCPVNGEWEAWGKWS DCSRLRMSINCEGTPGQQSRSRSCGGRKFNKPCAGKLQDIRHCYNIHNCIM KGSWSQWSTWSLCTPPCSPNATRVRQLCTPLLPKYPTVSMVEGQGEKNV TFWGTPrPLCEALQGQKLVVEEKRSCLHVPVCKDPEEKKP
<b>Research Area</b>	Immunology
<b>Source</b>	Yeast
<b>Target Names</b>	Cfp
<b>Protein Names</b>	Recommended name: Properdin Alternative name(s): Complement factor P
<b>Expression Region</b>	23-464aa
<b>Notes</b>	Repeated freezing and thawing is not recommended. Store working aliquots at 4°C for up to one week.
<b>Tag Info</b>	N-terminal 6xHis-tagged
<b>Mol. Weight</b>	49.9kDa
<b>Protein Length</b>	Full Length of Mature Protein
<b>Image</b>	



(Tris-Glycine gel) Discontinuous SDS-PAGE (reduced) with 5% enrichment gel and 15% separation gel.



Based on the SEQUEST from database of Yeast host and target protein, the LC-MS/MS Analysis result of CSB-YP005291MO could indicate that this peptide derived from Yeast-expressed Mus musculus (Mouse) Cfp.



Based on the SEQUEST from database of Yeast host and target protein, the LC-MS/MS Analysis result of CSB-YP005291MO could indicate that this peptide derived from Yeast-expressed Mus musculus (Mouse) Cfp.

## Reconstitution

We recommend that this vial be briefly centrifuged prior to opening to bring the contents to the bottom. Please reconstitute protein in deionized sterile water to a concentration of 0.1-1.0 mg/mL. We recommend to add 5-50% of glycerol (final concentration) and aliquot for long-term storage at -20°C/-80°C. Our default final concentration of glycerol is 50%. Customers could use it as reference.

## Shelf Life

The shelf life is related to many factors, storage state, buffer ingredients, storage temperature and the stability of the protein itself. Generally, the shelf life of liquid form is 6 months at -20°C/-80°C. The shelf life of lyophilized form is 12 months at -20°C/-80°C.