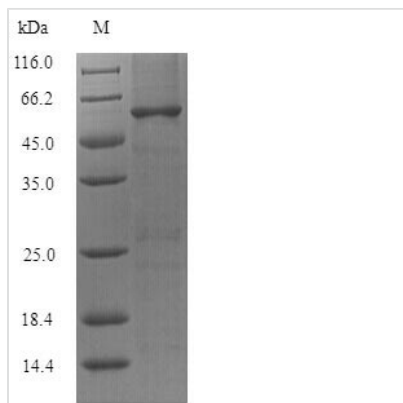




# Recombinant *Limosilactobacillus reuteri* Chaperonin GroEL (groEL)

<b>Product Code</b>	CSB-YP403635LLF
<b>Relevance</b>	Prevents misfolding and promotes the refolding and proper assembly of unfolded polypeptides generated under stress conditions.
<b>Abbreviation</b>	Recombinant <i>Lactobacillus reuteri</i> groL protein
<b>Storage</b>	The shelf life is related to many factors, storage state, buffer ingredients, storage temperature and the stability of the protein itself. Generally, the shelf life of liquid form is 6 months at -20°C/-80°C. The shelf life of lyophilized form is 12 months at -20°C/-80°C.
<b>Uniprot No.</b>	A5VIE9
<b>Product Type</b>	Recombinant Proteins
<b>Immunogen Species</b>	<i>Lactobacillus reuteri</i> (strain DSM 20016)
<b>Purity</b>	≥ 90% as determined by SDS-PAGE.
<b>Sequence</b>	MAKEIKFSEDARSAMLSGVDKLADTVKTTMGPKGRNVVLEQSYGTPPTITNDGV TIAKSIELNQFENMGAKLVAEVASKTNDIAGDGTATVLTQAIVNAGMKNVT SGANPVGIRRGIDKATEVAVEALKKMSHDVKTDDIEQIASISAANPEVGKLIAD AMEKVGHDGVITIEDSRGVDTSDVVEGMSFDRGYMSQYMVTDNDKMEADL DNPYILITDKKISNIQDILPLLQSVVQEGRALLIADDITGEALPTLVLNKIRGTFNV VSVKAPGFGDRRKAQLQDIAVLTGGTVISDDLGMCLKDATVDQLGQANKVTVT KDTTIVDGAGSKEAIQERVDQIKQEIAKSTSDFDKEKLQERLAKLSGGVAVVK VGAATETELKEKKYRIEDALNATRAAVQEGFVPGGGTALINVIPALDKIEADGD ELTGINIVKAALEAPVRQIAENAGVEGSVIVNELKNEKEGIGYNAADGKFEDMIK AGIVDPTMVTRSALQNAASVSALLLTTEAVVADKPDPNANNQAPAAPQGGMG GMM
<b>Research Area</b>	Others
<b>Source</b>	Yeast
<b>Target Names</b>	groL
<b>Protein Names</b>	Recommended name: 60 kDa chaperonin Alternative name(s): GroEL protein Protein Cpn60
<b>Expression Region</b>	1-542aa
<b>Notes</b>	Repeated freezing and thawing is not recommended. Store working aliquots at 4°C for up to one week.
<b>Tag Info</b>	N-terminal 6xHis-tagged
<b>Mol. Weight</b>	59.1kDa
<b>Protein Length</b>	Full Length
<b>Image</b>	



(Tris-Glycine gel) Discontinuous SDS-PAGE (reduced) with 5% enrichment gel and 15% separation gel.

### Shelf Life

The shelf life is related to many factors, storage state, buffer ingredients, storage temperature and the stability of the protein itself.

Generally, the shelf life of liquid form is 6 months at -20°C/-80°C. The shelf life of lyophilized form is 12 months at -20°C/-80°C.