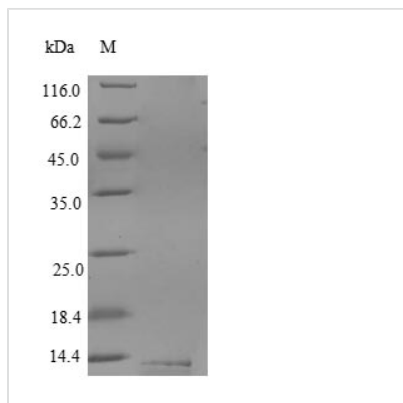




Recombinant Human CD59 glycoprotein (CD59)

Product Code	CSB-YP004947HU
Relevance	Potent inhibitor of the complement membrane attack complex (MAC) action. Acts by binding to the C8 and/or C9 components of the assembling MAC, thereby preventing incorporation of the multiple copies of C9 required for complete formation of the osmolytic pore. This inhibitor appears to be species-specific. Involved in signal transduction for T-cell activation complexed to a protein tyrosine kinase. The soluble form from urine retains its specific complement binding activity, but exhibits greatly reduced ability to inhibit MAC assembly on cell membranes.
Abbreviation	Recombinant Human CD59 protein
Storage	The shelf life is related to many factors, storage state, buffer ingredients, storage temperature and the stability of the protein itself. Generally, the shelf life of liquid form is 6 months at -20°C/-80°C. The shelf life of lyophilized form is 12 months at -20°C/-80°C.
Uniprot No.	P13987
Alias	1F5 antigen 20 kDa homologous restriction factor ;HRF-20 ;HRF20MAC-inhibitory protein ;MAC-IPMEM43 antigen;Membrane attack complex inhibition factor ;MACIFMembrane inhibitor of reactive lysis ;MIRLProtectin; CD59
Product Type	Recombinant Protein
Immunogen Species	Homo sapiens (Human)
Purity	Greater than 90% as determined by SDS-PAGE.
Sequence	LQCYNCPNPTADCKTAVNCSSDFDAKLITKAGLQVYNKCKWKFHCFNFDVTT RLRENELTYCCKKDLNCFNEQLEN
Research Area	Cardiovascular
Source	Yeast
Target Names	CD59
Protein Names	Recommended name: CD59 glycoprotein Alternative name(s): 1F5 antigen 20 kDa homologous restriction factor Short name= HRF-20 Short name= HRF20 MAC-inhibitory protein Short name= MAC-IP MEM43 antigen Membrane at
Expression Region	26-102aa
Notes	Repeated freezing and thawing is not recommended. Store working aliquots at 4°C for up to one week.
Tag Info	N-terminal 6xHis-tagged
Mol. Weight	11.0kDa
Protein Length	Full Length of Mature Protein
Image	



(Tris-Glycine gel) Discontinuous SDS-PAGE (reduced) with 5% enrichment gel and 15% separation gel.

Reconstitution

We recommend that this vial be briefly centrifuged prior to opening to bring the contents to the bottom. Please reconstitute protein in deionized sterile water to a concentration of 0.1-1.0 mg/mL. We recommend to add 5-50% of glycerol (final concentration) and aliquot for long-term storage at -20°C/-80°C. Our default final concentration of glycerol is 50%. Customers could use it as reference.

Shelf Life

The shelf life is related to many factors, storage state, buffer ingredients, storage temperature and the stability of the protein itself. Generally, the shelf life of liquid form is 6 months at -20°C/-80°C. The shelf life of lyophilized form is 12 months at -20°C/-80°C.