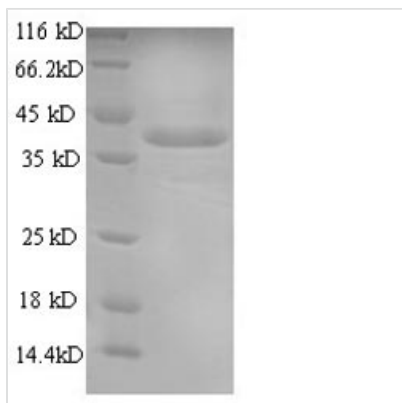




# Recombinant Mouse Annexin A1 (Anxa1)

<b>Product Code</b>	CSB-EP001836MO
<b>Relevance</b>	Calcium/phospholipid-binding protein which promotes mbrane fusion and is involved in exocytosis. This protein regulates phospholipase A2 activity. It ses to bind from two to four calcium ions with high affinity.
<b>Abbreviation</b>	Recombinant Mouse Anxa1 protein
<b>Storage</b>	The shelf life is related to many factors, storage state, buffer ingredients, storage temperature and the stability of the protein itself. Generally, the shelf life of liquid form is 6 months at -20°C/-80°C. The shelf life of lyophilized form is 12 months at -20°C/-80°C.
<b>Uniprot No.</b>	P10107
<b>Alias</b>	Annexin I;Annexin-1;Calpactin II;Calpactin-2;Chromobindin-9;Lipocortin I;Phospholipase A2 inhibitory protein;p35
<b>Product Type</b>	Recombinant Protein
<b>Immunogen Species</b>	Mus musculus (Mouse)
<b>Purity</b>	Greater than 90% as determined by SDS-PAGE.
<b>Sequence</b>	AMVSEFLKQARFLENQEQEYVQAVKSYKGGPGSAVSPYPSFNVSSDVAALHK AIMVKGVDIATIIDILTKRTNAQRQQIKAAYLQENGLPLDEVLRKALTGHLIEVV LAMLKTPAQFDADELRGAMKGLGTDEDTLIEILTTRSNEQIREINRVYREELKR DLAKDITSDTSGDFRKALLALAKGDRQCQLSVNQDLADTDARALYEAGERRKG TDVNVFTTILTSRSPHLRRVFQNYGKYSQHDMNKALDLELKGDIKCLTTIVK CATSTPAFFAEKLYEAMKGAGTRHKALIRIMVSRSEIDMNEIKVIFYQKKYGISLC QAILDETKGDYEKILVALCGGN
<b>Research Area</b>	Others
<b>Source</b>	E.coli
<b>Target Names</b>	Anxa1
<b>Expression Region</b>	2-346aa
<b>Notes</b>	Repeated freezing and thawing is not recommended. Store working aliquots at 4°C for up to one week.
<b>Tag Info</b>	N-terminal 6xHis-tagged
<b>Mol. Weight</b>	42.6kDa
<b>Protein Length</b>	Full Length of Mature Protein

Image



(Tris-Glycine gel) Discontinuous SDS-PAGE (reduced) with 5% enrichment gel and 15% separation gel.

### Reconstitution

We recommend that this vial be briefly centrifuged prior to opening to bring the contents to the bottom. Please reconstitute protein in deionized sterile water to a concentration of 0.1-1.0 mg/mL. We recommend to add 5-50% of glycerol (final concentration) and aliquot for long-term storage at -20°C/-80°C. Our default final concentration of glycerol is 50%. Customers could use it as reference.

### Shelf Life

The shelf life is related to many factors, storage state, buffer ingredients, storage temperature and the stability of the protein itself. Generally, the shelf life of liquid form is 6 months at -20°C/-80°C. The shelf life of lyophilized form is 12 months at -20°C/-80°C.