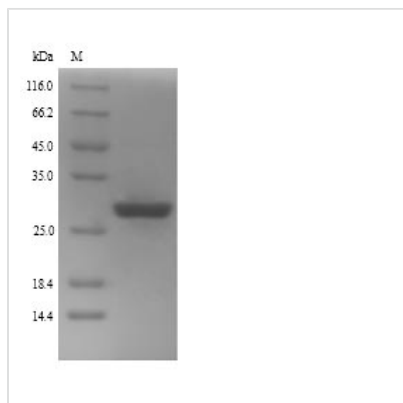




# Recombinant Human Zinc finger protein GLI2 (GLI2), partial

<b>Product Code</b>	CSB-YP009500HU
<b>Relevance</b>	Functions as transcription regulator in the hedgehog (Hh) pathway (PubMed:18455992). Functions as transcriptional activator (PubMed:9557682, PubMed:19878745, PubMed:24311597). May also function as transcriptional repressor (By similarity). Requires STK36 for full transcriptional activator activity. Required for normal embryonic development (PubMed:15994174, PubMed:20685856).
<b>Abbreviation</b>	Recombinant Human GLI2 protein, partial
<b>Storage</b>	The shelf life is related to many factors, storage state, buffer ingredients, storage temperature and the stability of the protein itself. Generally, the shelf life of liquid form is 6 months at -20°C/-80°C. The shelf life of lyophilized form is 12 months at -20°C/-80°C.
<b>Uniprot No.</b>	P10070
<b>Alias</b>	GLI family zinc finger protein 2 Tax helper protein
<b>Product Type</b>	Recombinant Protein
<b>Immunogen Species</b>	Homo sapiens (Human)
<b>Purity</b>	Greater than 90% as determined by SDS-PAGE.
<b>Sequence</b>	EQLADLKEDLDRDDCKQEAENVVIYETNCHWEDCTKEYDTQEQLVHHINNEHIH GEKKEFVCRWQACTREQKPFKAQYMLVVHMRRHTGEKPHKCTFEGCSKAYS RLENLKTHLRSHTGEKPYVCEHEGCNKAFSNASDRAKHQNRTHSNEKPYICKI PGCTKRYTDPSSLRKHVKT VHGPDAHVTKKQRNDVHLRTPLLKENG DSEAGT EPGGPESTEASSTSQAVEDCL
<b>Research Area</b>	Epigenetics and Nuclear Signaling
<b>Source</b>	Yeast
<b>Target Names</b>	GLI2
<b>Protein Names</b>	Recommended name: Zinc finger protein GLI2 Alternative name(s): Tax helper protein
<b>Expression Region</b>	412-641aa
<b>Notes</b>	Repeated freezing and thawing is not recommended. Store working aliquots at 4°C for up to one week.
<b>Tag Info</b>	N-terminal 6xHis-tagged
<b>Mol. Weight</b>	28.5kDa
<b>Protein Length</b>	Partial
<b>Image</b>	



(Tris-Glycine gel) Discontinuous SDS-PAGE (reduced) with 5% enrichment gel and 15% separation gel.

### Reconstitution

We recommend that this vial be briefly centrifuged prior to opening to bring the contents to the bottom. Please reconstitute protein in deionized sterile water to a concentration of 0.1-1.0 mg/mL. We recommend to add 5-50% of glycerol (final concentration) and aliquot for long-term storage at -20°C/-80°C. Our default final concentration of glycerol is 50%. Customers could use it as reference.

### Shelf Life

The shelf life is related to many factors, storage state, buffer ingredients, storage temperature and the stability of the protein itself. Generally, the shelf life of liquid form is 6 months at -20°C/-80°C. The shelf life of lyophilized form is 12 months at -20°C/-80°C.