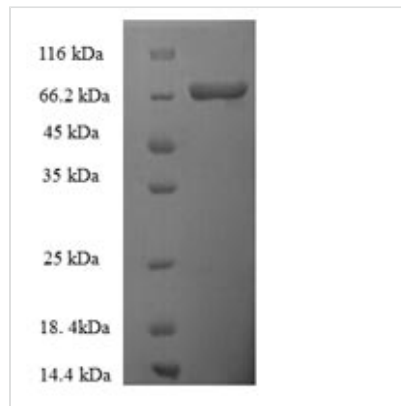


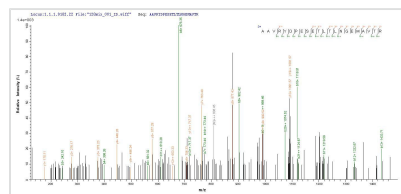


Recombinant Human Thyroid hormone receptor beta (THRB)

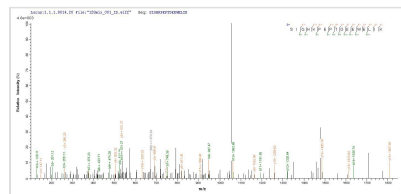
Product Code	CSB-EP023514HU
Relevance	Nuclear hormone receptor that can act as a repressor or activator of transcription. High affinity receptor for thyroid hormones, including triiodothyronine and thyroxine
Abbreviation	Recombinant Human THRB protein
Storage	The shelf life is related to many factors, storage state, buffer ingredients, storage temperature and the stability of the protein itself. Generally, the shelf life of liquid form is 6 months at -20°C/-80°C. The shelf life of lyophilized form is 12 months at -20°C/-80°C.
Uniprot No.	P10828
Alias	Nuclear receptor subfamily 1 group A member 2c-erbA-2c-erbA-beta
Product Type	Recombinant Protein
Immunogen Species	Homo sapiens (Human)
Purity	≥ 90% as determined by SDS-PAGE.
Sequence	MTPNSMTENGLTAWDKPKHCPDREHDWKLVGMSEACLHRKSHSERRSTLKN EQSSPHLIQTTWTSSIFHLDHDDVNDQSVSSAQTFQTEEKCKGYIPSYLDKD ELCVVCGDKATGYHYRCITCEGCKGFFRRTIQKNLHPSYSCKYEGKCVIDKVT RNQCQECRFKKCIYVGMATDLVLDDSKRLAKRKLIEENREKRRREELQKSIGH KPEPTDEEWELIKTVTEAHVATNAQGSHWKQRKFLPEDIGQAPIVNAPEGGK VDLEAFSHFTKIITPAITRVVDFAKKLPMFCELPCEQIILLKGCCMEIMSLRAAV RYDPESETLTLNGEMAVTRGQLKNGGLGVVSDAIFDLGMSLSSFNLDDEVAL LQAVLLMSSDRPGLACVERIEKYQDSFLLAFEHYINYRKHVTHFWPKLLMKV TDLRMIGACHASRFLHMKVECPTELPPLFLEVFEF
Research Area	Cardiovascular
Source	E.coli
Target Names	THRB
Protein Names	Recommended name: Thyroid hormone receptor beta Alternative name(s): Nuclear receptor subfamily 1 group A member 2 c-erbA-2 c-erbA-beta
Expression Region	1-461aa
Notes	Repeated freezing and thawing is not recommended. Store working aliquots at 4°C for up to one week.
Tag Info	N-terminal 6xHis-SUMO-tagged
Mol. Weight	68.8kDa
Protein Length	Full Length
Image	



(Tris-Glycine gel) Discontinuous SDS-PAGE (reduced) with 5% enrichment gel and 15% separation gel.



Based on the SEQUEST from database of E.coli host and target protein, the LC-MS/MS Analysis result of CSB-EP023514HU could indicate that this peptide derived from E.coli-expressed Homo sapiens (Human) THR B.



Based on the SEQUEST from database of E.coli host and target protein, the LC-MS/MS Analysis result of CSB-EP023514HU could indicate that this peptide derived from E.coli-expressed Homo sapiens (Human) THR B.

Reconstitution

We recommend that this vial be briefly centrifuged prior to opening to bring the contents to the bottom. Please reconstitute protein in deionized sterile water to a concentration of 0.1-1.0 mg/mL. We recommend to add 5-50% of glycerol (final concentration) and aliquot for long-term storage at -20°C/-80°C. Our default final concentration of glycerol is 50%. Customers could use it as reference.

Shelf Life

The shelf life is related to many factors, storage state, buffer ingredients, storage temperature and the stability of the protein itself. Generally, the shelf life of liquid form is 6 months at -20°C/-80°C. The shelf life of lyophilized form is 12 months at -20°C/-80°C.