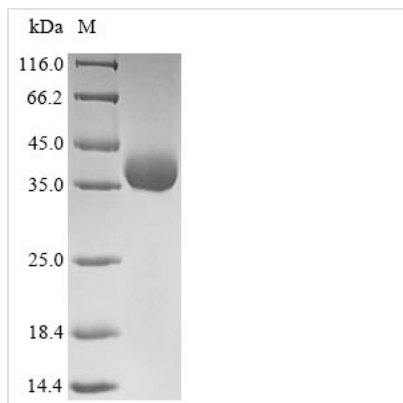




# Recombinant Rotavirus X Outer capsid protein VP4, partial

<b>Product Code</b>	CSB-YP434929RIR
<b>Relevance</b>	Spike-forming protein that mediates virion attachment to the host epithelial cell receptors and plays a major role in cell penetration, determination of host range restriction and virulence. Rotavirus entry into the host cell probably involves multiple sequential contacts between the outer capsid proteins VP4 and VP7, and the cell receptors
<b>Abbreviation</b>	Recombinant Rotavirus X Outer capsid protein VP4 protein, partial
<b>Storage</b>	The shelf life is related to many factors, storage state, buffer ingredients, storage temperature and the stability of the protein itself. Generally, the shelf life of liquid form is 6 months at -20°C/-80°C. The shelf life of lyophilized form is 12 months at -20°C/-80°C.
<b>Uniprot No.</b>	A9Q1L0
<b>Product Type</b>	Recombinant Protein
<b>Immunogen Species</b>	Rotavirus X (isolate RVX/Human/Bangladesh/NADRV-B219/2002/GXP[X]) (RV ADRV-N) (Rotavirus (isolate novel adult diarrhea rotavirus-B219))
<b>Purity</b>	Greater than 85% as determined by SDS-PAGE.
<b>Sequence</b>	MSLRSLITTEAVGETTQTSDHQTFSSTRTYNEINDRPSLRVEKDGEKAYCFKN LDPVRYDTRMGEYPFDYGGQSTENNLQFDFLFTKDLMDATDGLSDDVRDDL KRQIKEYYQQGYRAIFLIRPQNQEQQYIASYSSTNLNFTSQLSVGVNLSVLNKI QENKLHIYSTQPHIPSVGCEMITKIFRTDVDNENSLINYSVPVTVTISVTKATFED TFVWNQNNNDYPNMNYKDLIPAVTKNSIYHDVKR
<b>Research Area</b>	others
<b>Source</b>	Yeast
<b>Protein Names</b>	Hemagglutinin
<b>Expression Region</b>	1-249aa
<b>Notes</b>	Repeated freezing and thawing is not recommended. Store working aliquots at 4°C for up to one week.
<b>Tag Info</b>	N-terminal 6xHis-tagged
<b>Mol. Weight</b>	30.8kDa
<b>Protein Length</b>	Partial
<b>Image</b>	



(Tris-Glycine gel) Discontinuous SDS-PAGE (reduced) with 5% enrichment gel and 15% separation gel.

### Reconstitution

We recommend that this vial be briefly centrifuged prior to opening to bring the contents to the bottom. Please reconstitute protein in deionized sterile water to a concentration of 0.1-1.0 mg/mL. We recommend to add 5-50% of glycerol (final concentration) and aliquot for long-term storage at -20°C/-80°C. Our default final concentration of glycerol is 50%. Customers could use it as reference.

### Shelf Life

The shelf life is related to many factors, storage state, buffer ingredients, storage temperature and the stability of the protein itself. Generally, the shelf life of liquid form is 6 months at -20°C/-80°C. The shelf life of lyophilized form is 12 months at -20°C/-80°C.