



Recombinant Human Eukaryotic peptide chain release factor GTP-binding subunit ERF3A (GSPT1)

Product Code	CSB-YP009966HU
Relevance	Involved in translation termination in response to the termination codons UAA, UAG and UGA. Stimulates the activity of ERF1. Involved in regulation of mammalian cell growth. Component of the transient SURF complex which recruits UPF1 to stalled ribosomes in the context of nonsense-mediated decay (NMD) of mRNAs containing premature stop codons.
Abbreviation	Recombinant Human GSPT1 protein
Storage	The shelf life is related to many factors, storage state, buffer ingredients, storage temperature and the stability of the protein itself. Generally, the shelf life of liquid form is 6 months at -20°C/-80°C. The shelf life of lyophilized form is 12 months at -20°C/-80°C.
Uniprot No.	P15170
Product Type	Recombinant Protein
Immunogen Species	Homo sapiens (Human)
Purity	≥ 85% as determined by SDS-PAGE.
Sequence	MELSEPIVENGETEMSPESWEHKEEISEAEPGGGSLGDGRPPEESAHEMME EEEEIPKPKSVVAPPGAPKKEHVNVVFIGHVVDAGKSTIGGQIMYLTMVDRKRTL EKYEREAKEKNRETWYLSWALDTNQEERDKGKTVEVGRAYFETEKKHFTILD APGHKSFVPMIGGASQADLAVLVISARKGEFETGFEEKGGQTRHAMLAKTA GVKHLIVLINKMDDPTVNWSNERYEECKEKLVPFLKKGVFNPKKDIHFMPCSG LTGANLKEQSDFCPWYIGLPFIPYLDNLNPNFNRSVDGPIRLPIVDKYKDMGTVV LGKLESGSICKGQQLVMMPNKHNVVVLGILSDDVETDTVAPGENLKIRLKGIEE EEILPGFILCDPNNLCHSGRTFDAQIVIIHKSIIICPGYNAVLHIHTCIEEVEITALIC LVDKKSGEKSKTRPRFVKQDQVCIARLRTAGTICLETFKDFPQMGRFTLRDEG KTIAIGKVLKLVPEKD
Research Area	Epigenetics and Nuclear Signaling
Source	Yeast
Target Names	GSPT1
Protein Names	Recommended name: Eukaryotic peptide chain release factor GTP-binding subunit ERF3A Short name= Eukaryotic peptide chain release factor subunit 3a Short name= eRF3a Alternative name(s): G1 to S phase transition protein 1 homolog
Expression Region	1-499aa
Notes	Repeated freezing and thawing is not recommended. Store working aliquots at 4°C for up to one week.

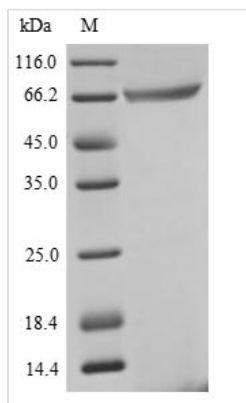


Tag Info N-terminal 10xHis-tagged and C-terminal Myc-tagged

Mol. Weight 59.8 kDa

Protein Length Full Length

Image



(Tris-Glycine gel) Discontinuous SDS-PAGE (reduced) with 5% enrichment gel and 15% separation gel.

Reconstitution

We recommend that this vial be briefly centrifuged prior to opening to bring the contents to the bottom. Please reconstitute protein in deionized sterile water to a concentration of 0.1-1.0 mg/mL. We recommend to add 5-50% of glycerol (final concentration) and aliquot for long-term storage at $-20^{\circ}\text{C}/-80^{\circ}\text{C}$. Our default final concentration of glycerol is 50%. Customers could use it as reference.

Shelf Life

The shelf life is related to many factors, storage state, buffer ingredients, storage temperature and the stability of the protein itself.

Generally, the shelf life of liquid form is 6 months at $-20^{\circ}\text{C}/-80^{\circ}\text{C}$. The shelf life of lyophilized form is 12 months at $-20^{\circ}\text{C}/-80^{\circ}\text{C}$.