

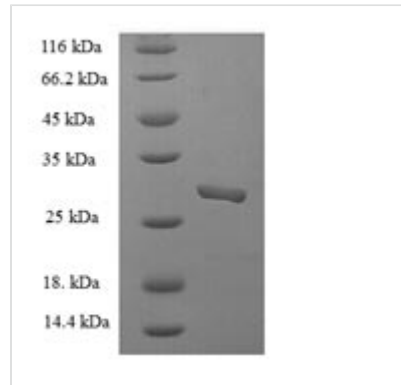


# Recombinant Rotavirus A Non-structural glycoprotein 4, partial

<b>Product Code</b>	CSB-EP465285ROJ
<b>Relevance</b>	Involved in virus morphogenesis. Functions as a receptor for the immature double-layered inner capsid particle (ICP) which transiently buds into the lumen of the rough endoplasmic reticulum during viral maturation. Enterotoxin that causes a phospholipase C-dependent elevation of the intracellular calcium concentration in host intestinal mucosa cells. Increased concentration of intracellular calcium disrupts the cytoskeleton and the tight junctions, raising the paracellular permeability. Potentiates chloride ion secretion through a calcium ion-dependent signaling pathway, inducing age-dependent diarrhea. To perform this enterotoxigenic role in vivo, NSP4 is probably released from infected enterocytes in a soluble form capable of diffusing within the intestinal lumen and interacting with the plasma membrane receptors on neighboring epithelial cells. Possible receptors for NSP4 are alpha-1/beta-1 and alpha-2/beta-1 integrin heterodimers.
<b>Abbreviation</b>	Recombinant Rotavirus A Non-structural glycoprotein 4 protein, partial
<b>Storage</b>	The shelf life is related to many factors, storage state, buffer ingredients, storage temperature and the stability of the protein itself. Generally, the shelf life of liquid form is 6 months at -20°C/-80°C. The shelf life of lyophilized form is 12 months at -20°C/-80°C.
<b>Uniprot No.</b>	A2T3Q0
<b>Product Type</b>	Recombinant Proteins
<b>Immunogen Species</b>	Rotavirus A (isolate RVA/Monkey/South Africa/SA11-H96/1958/G3P5B[2]) (RV-A) (Simian Agent 11 (isolate SI/South Africa/H96/58))
<b>Purity</b>	Greater than 90% as determined by SDS-PAGE.
<b>Sequence</b>	PTMKIALKTSKCSYKVVKYCIVTIFNTLLKLAGYKEQITTKDEIEKQMDRVVKEM RRQLEMIDKLTTREIEQVELLKRIYDKLTVQTTGEIDMTKEINQKNVRTLEEWES GKNPYEPREVTAAAM
<b>Research Area</b>	Others
<b>Source</b>	E.coli
<b>Target Names</b>	N/A
<b>Expression Region</b>	52-175aa
<b>Notes</b>	Repeated freezing and thawing is not recommended. Store working aliquots at 4°C for up to one week.
<b>Tag Info</b>	N-terminal 6xHis-SUMO-tagged
<b>Mol. Weight</b>	30.6kDa
<b>Protein Length</b>	Partial



## Image



(Tris-Glycine gel) Discontinuous SDS-PAGE (reduced) with 5% enrichment gel and 15% separation gel.

## Shelf Life

The shelf life is related to many factors, storage state, buffer ingredients, storage temperature and the stability of the protein itself.

Generally, the shelf life of liquid form is 6 months at -20°C/-80°C. The shelf life of lyophilized form is 12 months at -20°C/-80°C.