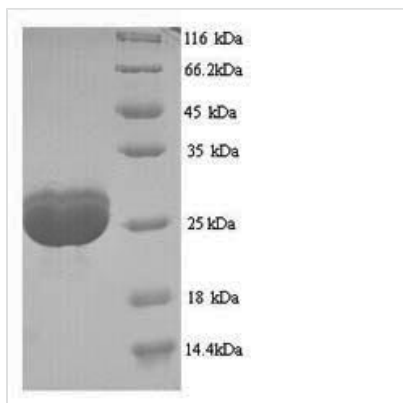




Recombinant Human Filaggrin (FLG), partial

Product Code	CSB-YP008712HU
Relevance	Aggregates keratin intermediate filaments and promotes disulfide-bond formation among the intermediate filaments during terminal differentiation of mammalian epidermis.
Abbreviation	Recombinant Human FLG protein, partial
Storage	The shelf life is related to many factors, storage state, buffer ingredients, storage temperature and the stability of the protein itself. Generally, the shelf life of liquid form is 6 months at -20°C/-80°C. The shelf life of lyophilized form is 12 months at -20°C/-80°C.
Uniprot No.	P20930
Product Type	Recombinant Protein
Immunogen Species	Homo sapiens (Human)
Purity	Greater than 90% as determined by SDS-PAGE.
Sequence	DSSRHSQSGQGESAGSRRSRRQGSSVSQDSDSEAYPEDSERRSESASRNH HGSSREQSRDGSRHGSSHRDTASHVQSSPVQSDSSTAKEHGHFSSLSQDS AYHSGIQSRGSPHSSSSYHYQSEGTERQKGGQGLVWRHGSYGSADYDYGES GFRHSQHGSVSYNSNPVVKERSDICKASAFGKDHPRYATYINKDPGLCGH SSDISKQLGFSQSQRYYYYE
Research Area	Signal Transduction
Source	Yeast
Target Names	FLG
Protein Names	Recommended name: Filaggrin
Expression Region	3838-4061aa
Notes	Repeated freezing and thawing is not recommended. Store working aliquots at 4°C for up to one week.
Tag Info	N-terminal 6xHis-tagged
Mol. Weight	26.8kDa
Protein Length	Partial
Image	



(Tris-Glycine gel) Discontinuous SDS-PAGE (reduced) with 5% enrichment gel and 15% separation gel.

Reconstitution

We recommend that this vial be briefly centrifuged prior to opening to bring the contents to the bottom. Please reconstitute protein in deionized sterile water to a concentration of 0.1-1.0 mg/mL. We recommend to add 5-50% of glycerol (final concentration) and aliquot for long-term storage at $-20^{\circ}\text{C}/-80^{\circ}\text{C}$. Our default final concentration of glycerol is 50%. Customers could use it as reference.

Shelf Life

The shelf life is related to many factors, storage state, buffer ingredients, storage temperature and the stability of the protein itself. Generally, the shelf life of liquid form is 6 months at $-20^{\circ}\text{C}/-80^{\circ}\text{C}$. The shelf life of lyophilized form is 12 months at $-20^{\circ}\text{C}/-80^{\circ}\text{C}$.