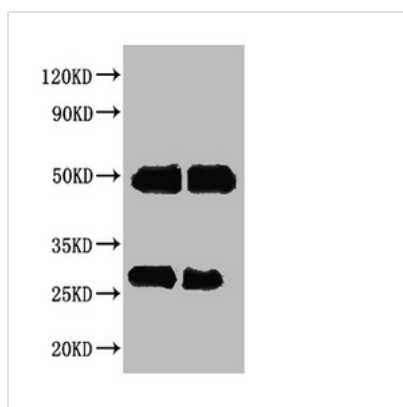




Rabbit anti-Human IgG Antibody

Product Code	CSB-PA00120E1Rb
Storage	Upon receipt, store at -20°C or -80°C. Avoid repeated freeze.
Immunogen	IgG purified from Human serum
Raised In	Rabbit
Species Reactivity	Human
Tested Applications	ELISA,WB;Recommended dilution:WB:1:500-1:5000
Relevance	Immunoglobulin G (IgG), is one of the most abundant proteins in human serum with normal levels between 8-17 mg/ml in adult blood. IgG is important for our defence against microorganisms and the molecules are produced by B lymphocytes as a part of our adaptive immune response. The IgG molecule has two separate functions; to bind to the pathogen that elicited the response and to recruit other cells and molecules to destroy the antigen. The variability of the IgG pool is generated by somatic recombination and the number of specificities in an individual at a given time point is estimated to be 10 ¹¹ variants.
Form	Liquid
Conjugate	non-conjugated
Storage Buffer	Preservative: 0.03% Proclin 300 Constituents: 50% Glycerol, 0.01M PBS, pH 7.4
Purification Method	CA-AS
Isotype	IgG
Clonality	polyclonal
Product Type	Secondary Antibody

Image



Western blot

All lanes : Human IgG antibody at 2µg/ml

Lane 1 : Human IgG protein 70ng

Lane 2 : Human IgG protein 50ng

Secondary

Goat polyclonal to Rabbit IgG at 1/50000 dilution

Usage

For Research Use Only. Not for use in diagnostic or therapeutic procedures.