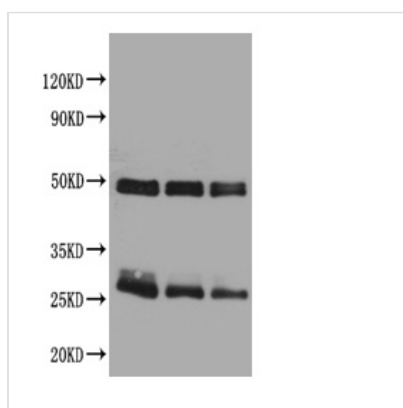




# Rabbit anti-Rat IgG Antibody

<b>Product Code</b>	CSB-PA00230E1Rb
<b>Storage</b>	Upon receipt, store at -20°C or -80°C. Avoid repeated freeze.
<b>Immunogen</b>	IgG purified from Rat serum
<b>Raised In</b>	Rabbit
<b>Species Reactivity</b>	Rat
<b>Tested Applications</b>	ELISA,WB;Recommended dilution:WB:1:500-1:5000
<b>Relevance</b>	Immunoglobulin G (IgG), is one of the most abundant proteins in human serum with normal levels between 8-17 mg/ml in adult blood. IgG is important for our defence against microorganisms and the molecules are produced by B lymphocytes as a part of our adaptive immune response. The IgG molecule has two separate functions; to bind to the pathogen that elicited the response and to recruit other cells and molecules to destroy the antigen. The variability of the IgG pool is generated by somatic recombination and the number of specificities in an individual at a given time point is estimated to be 1011 variants.
<b>Form</b>	Liquid
<b>Conjugate</b>	Non-conjugated
<b>Storage Buffer</b>	0.01M PBS, PH 7.4
<b>Purification Method</b>	CA-AS
<b>Isotype</b>	IgG
<b>Clonality</b>	polyclonal
<b>Product Type</b>	Secondary Antibody

## Image



### Western blot

All lanes : Rat IgG antibody at 2µg/ml

Lane 1 : Rat IgG protein 70ng

Lane 2 : Rat IgG protein 50ng

Lane 3 : Rat IgG protein 30ng

Secondary

Goat polyclonal to Rabbit IgG at 1/50000 dilution

## Usage

For Research Use Only. Not for use in diagnostic or therapeutic procedures.