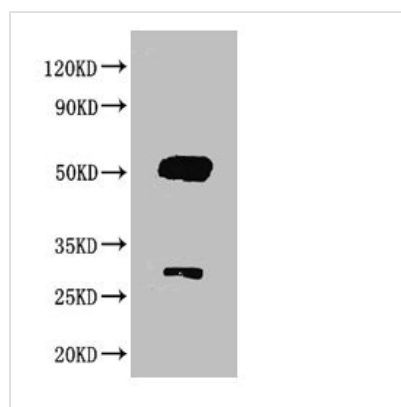




# Rabbit anti-Goat IgG Antibody

<b>Product Code</b>	CSB-PA00220E1Rb
<b>Storage</b>	Upon receipt, store at -20°C or -80°C. Avoid repeated freeze.
<b>Immunogen</b>	IgG purified from goat serum
<b>Raised In</b>	Rabbit
<b>Species Reactivity</b>	Goat
<b>Tested Applications</b>	ELISA, WB; Recommended dilution: WB:1:500-1:5000
<b>Relevance</b>	Immunoglobulin G (IgG), is one of the most abundant proteins in human serum with normal levels between 8-17 mg/ml in adult blood. IgG is important for our defence against microorganisms and the molecules are produced by B lymphocytes as a part of our adaptive immune response. The IgG molecule has two separate functions; to bind to the pathogen that elicited the response and to recruit other cells and molecules to destroy the antigen. The variability of the IgG pool is generated by somatic recombination and the number of specificities in an individual at a given time point is estimated to be 10 <sup>11</sup> variants.
<b>Form</b>	Liquid
<b>Conjugate</b>	Non-conjugated
<b>Storage Buffer</b>	Preservative: 0.03% Proclin 300 Constituents: 50% Glycerol, 0.01M PBS, PH 7.4
<b>Purification Method</b>	>95%, ProteinG purified
<b>Isotype</b>	IgG
<b>Clonality</b>	polyclonal
<b>Product Type</b>	Secondary Antibody

## Image



Western blot  
 All lanes : Goat IgG antibody at 2µg/ml  
 Lane 1 : Goat IgG protein 70ng  
 Secondary  
 Goat polyclonal to Rabbit IgG at 1/50000 dilution