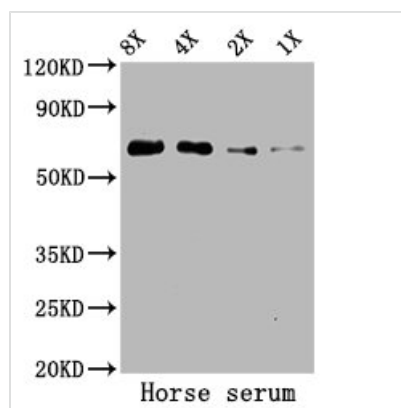




ALB Antibody

Product Code	CSB-PA00040E1Rb
Storage	Upon receipt, store at -20°C or -80°C. Avoid repeated freeze.
Uniprot No.	P35747
Immunogen	Serum Albumin purified from Horse serum (Native Protein)
Raised In	Rabbit
Species Reactivity	Horse
Tested Applications	ELISA, WB; Recommended dilution: WB:1:500-1:5000
Form	Liquid
Conjugate	Non-conjugated
Storage Buffer	Preservative: 0.03% Proclin 300 Constituents: 50% Glycerol, 0.01M PBS, PH 7.4
Purification Method	>95%, Protein G purified
Isotype	IgG
Clonality	Polyclonal
Alias	Serum albumin (allergen Equ c 3), ALB
Immunogen Species	Horse
Research Area	Cardiovascular
Target Names	ALB

Image



Western Blot

Positive WB detected in: Horse serum

All lanes: ALB antibody at 5.2µg/ml

Secondary

Goat polyclonal to rabbit IgG at 1/50000 dilution

Predicted band size: 69 kDa

Observed band size: 69 kDa

Usage

For Research Use Only. Not for use in diagnostic or therapeutic procedures.