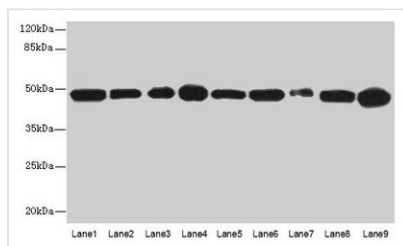




# GOT2 Antibody

<b>Product Code</b>	CSB-PA03065A0Rb
<b>Storage</b>	Upon receipt, store at -20°C or -80°C. Avoid repeated freeze.
<b>Uniprot No.</b>	P00505
<b>Immunogen</b>	Recombinant Human Aspartate aminotransferase, mitochondrial protein (33-279AA)
<b>Raised In</b>	Rabbit
<b>Species Reactivity</b>	Human, Mouse
<b>Tested Applications</b>	ELISA, WB, IHC, IF; Recommended dilution: WB:1:1000-1:5000, IHC:1:20-1:200, IF:1:50-1:200
<b>Form</b>	Liquid
<b>Conjugate</b>	Non-conjugated
<b>Storage Buffer</b>	Preservative: 0.03% Proclin 300 Constituents: 50% Glycerol, 0.01M PBS, PH 7.4
<b>Purification Method</b>	>95%, Protein G purified
<b>Isotype</b>	IgG
<b>Clonality</b>	Polyclonal
<b>Alias</b>	Aspartate aminotransferase, mitochondrial (mAspAT) (EC 2.6.1.1) (EC 2.6.1.7) (Fatty acid-binding protein) (FABP-1) (Glutamate oxaloacetate transaminase 2) (Kynurenine aminotransferase 4) (Kynurenine aminotransferase IV) (Kynurenine--oxoglutarate transaminase 4) (Kynurenine--oxoglutarate transaminase IV) (Plasma membrane-associated fatty acid-binding protein) (FABPpm) (Transaminase A), GOT2
<b>Immunogen Species</b>	Homo sapiens (Human)
<b>Research Area</b>	Signal Transduction
<b>Target Names</b>	GOT2

## Image



### Western blot

All lanes: GOT2 antibody at 3µg/ml

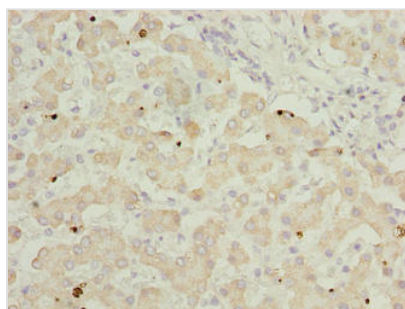
- Lane 1: A431 whole cell lysate
- Lane 2: HepG2 whole cell lysate
- Lane 3: Mouse muscle tissue
- Lane 4: Mouse spleen tissue
- Lane 5: MCF-7 whole cell lysate
- Lane 6: Hela whole cell lysate
- Lane 7: LO2 whole cell lysate
- Lane 8: 293T whole cell lysate
- Lane 9: HL60 whole cell lysate

Secondary

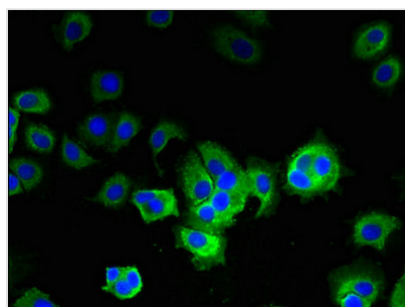
Goat polyclonal to rabbit IgG at 1/10000 dilution

Predicted band size: 48, 44 kDa

Observed band size: 48 kDa



Immunohistochemistry of paraffin-embedded human liver tissue using CSB-PA03065A0Rb at dilution of 1:100



Immunofluorescent analysis of MCF-7 cells using CSB-PA03065A0Rb at dilution of 1:100 and Alexa Fluor 488-conjugated AffiniPure Goat Anti-Rabbit IgG(H+L)

## Usage

For Research Use Only. Not for use in diagnostic or therapeutic procedures.