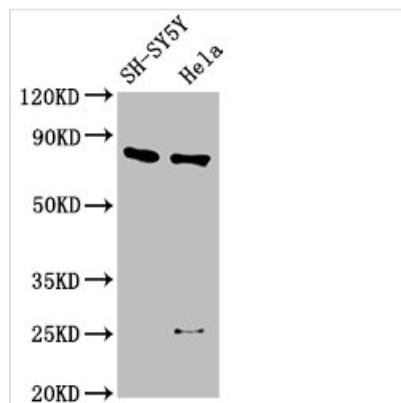




CTNNB1 Antibody

Product Code	CSB-PA00174A0Rb
Storage	Upon receipt, store at -20°C or -80°C. Avoid repeated freeze.
Uniprot No.	P35222
Immunogen	Recombinant Human Catenin beta-1 protein (2-781AA)
Raised In	Rabbit
Species Reactivity	Human
Tested Applications	ELISA, WB, IHC, IF, IP; Recommended dilution: WB:1:500-1:5000, IHC:1:100-1:500, IF:1:50-1:200, IP:1:200-1:2000
Form	Liquid
Conjugate	Non-conjugated
Storage Buffer	Preservative: 0.03% Proclin 300 Constituents: 50% Glycerol, 0.01M PBS, PH 7.4
Purification Method	>95%, Protein G purified
Isotype	IgG
Clonality	Polyclonal
Alias	Catenin beta-1 (Beta-catenin), CTNNB1, CTNNB
Immunogen Species	Homo sapiens (Human)
Research Area	Signal Transduction
Target Names	CTNNB1

Image



Western Blot

Positive WB detected in: SH-SY5Y whole cell

lysate, HeLa whole cell lysate

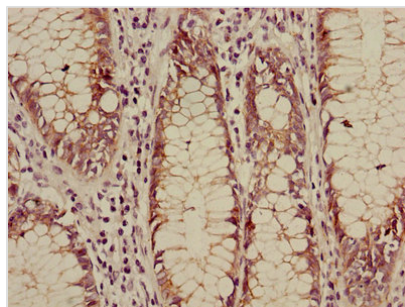
All lanes: CTNNB1 antibody at 2.5µg/ml

Secondary

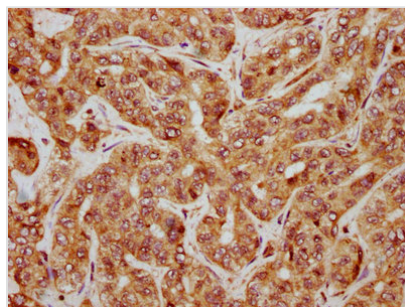
Goat polyclonal to rabbit IgG at 1/50000 dilution

Predicted band size: 86 kDa

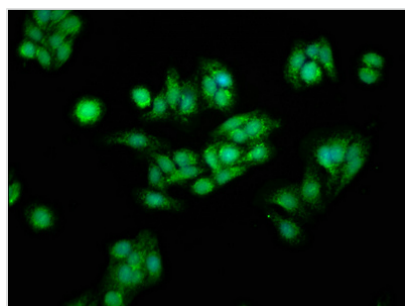
Observed band size: 86 kDa



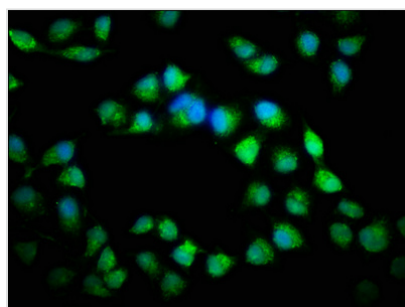
Immunohistochemistry of paraffin-embedded human colon cancer using CSB-PA00174A0Rb at dilution of 1:100



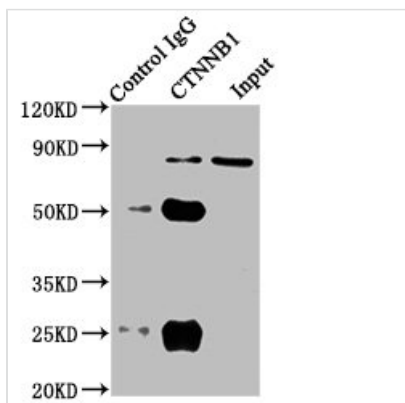
IHC image of CSB-PA00174A0Rb diluted at 1:500 and staining in paraffin-embedded human liver cancer performed on a Leica Bond™ system. After dewaxing and hydration, antigen retrieval was mediated by high pressure in a citrate buffer (pH 6.0). Section was blocked with 10% normal goat serum 30min at RT. Then primary antibody (1% BSA) was incubated at 4°C overnight. The primary is detected by a biotinylated secondary antibody and visualized using an HRP conjugated SP system.



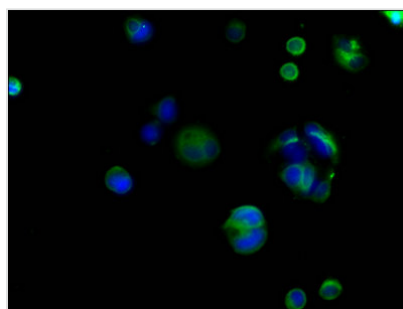
Immunofluorescence staining of HepG2 cells with CSB-PA00174A0Rb at 1:166, counter-stained with DAPI. The cells were fixed in 4% formaldehyde, permeabilized using 0.2% Triton X-100 and blocked in 10% normal Goat Serum. The cells were then incubated with the antibody overnight at 4°C. The secondary antibody was Alexa Fluor 488-conjugated AffiniPure Goat Anti-Rabbit IgG(H+L).



Immunofluorescence staining of HeLa cells with CSB-PA00174A0Rb at 1:166, counter-stained with DAPI. The cells were fixed in 4% formaldehyde, permeabilized using 0.2% Triton X-100 and blocked in 10% normal Goat Serum. The cells were then incubated with the antibody overnight at 4°C. The secondary antibody was Alexa Fluor 488-conjugated AffiniPure Goat Anti-Rabbit IgG(H+L).



Immunoprecipitating CTNNB1 in HT29 whole cell lysate
 Lane 1: Rabbit control IgG instead of CSB-PA00174A0Rb in HT29 whole cell lysate. For western blotting, a HRP-conjugated Protein G antibody was used as the secondary antibody (1/5000)
 Lane 2: CSB-PA00174A0Rb (8µg) + HT29 whole cell lysate (500µg)
 Lane 3: HT29 whole cell lysate (20µg)



Immunofluorescence staining of MCF-7 cells with CSB-PA00174A0Rb at 1:166, counter-stained with DAPI. The cells were fixed in 4% formaldehyde, permeabilized using 0.2% Triton X-100 and blocked in 10% normal Goat Serum. The cells were then incubated with the antibody overnight at 4°C. The secondary antibody was Alexa Fluor 488-conjugated AffiniPure Goat Anti-Rabbit IgG(H+L).

Usage

For Research Use Only. Not for use in diagnostic or therapeutic procedures.