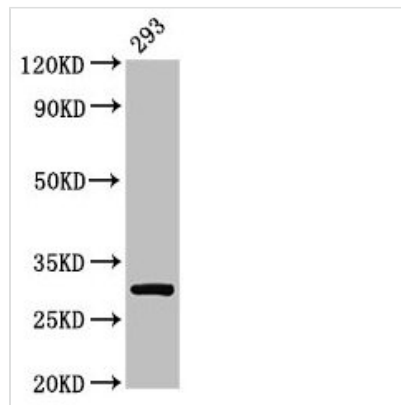




RPA2 Antibody

Product Code	CSB-PA01555A0Rb
Storage	Upon receipt, store at -20°C or -80°C. Avoid repeated freeze.
Uniprot No.	P15927
Immunogen	Recombinant Human Replication protein A 32 kDa subunit protein (1-267AA)
Raised In	Rabbit
Species Reactivity	Human
Tested Applications	ELISA, WB, IHC, IF, IP; Recommended dilution: WB:1:1000-1:5000, IHC:1:20-1:200, IF:1:50-1:200, IP:1:200-1:2000
Form	Liquid
Conjugate	Non-conjugated
Storage Buffer	Preservative: 0.03% Proclin 300 Constituents: 50% Glycerol, 0.01M PBS, PH 7.4
Purification Method	>95%, Protein G purified
Isotype	IgG
Clonality	Polyclonal
Alias	Replication protein A 32 kDa subunit (RP-A p32) (Replication factor A protein 2) (RF-A protein 2) (Replication protein A 34 kDa subunit) (RP-A p34), RPA2, REPA2 RPA32 RPA34
Immunogen Species	Homo sapiens (Human)
Research Area	Epigenetics and Nuclear Signaling
Target Names	RPA2

Image



Western Blot

Positive WB detected in: 293 whole cell lysate

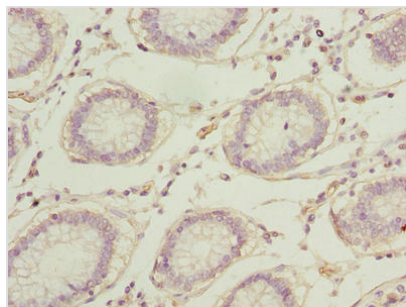
All lanes: RPA2 antibody at 2µg/ml

Secondary

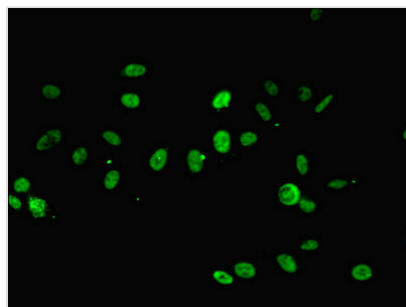
Goat polyclonal to rabbit IgG at 1/50000 dilution

Predicted band size: 30, 31, 39 kDa

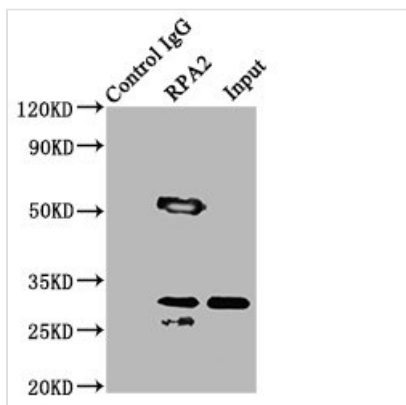
Observed band size: 30 kDa



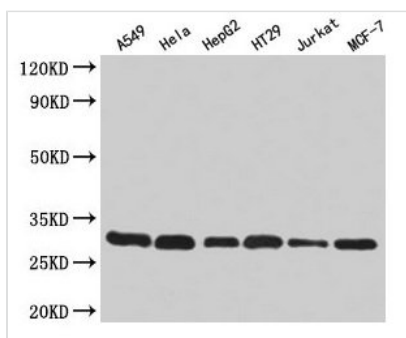
Immunohistochemistry of paraffin-embedded human colon cancer using CSB-PA01555A0Rb at dilution of 1:100



Immunofluorescent analysis of HeLa cells using CSB-PA01555A0Rb at dilution of 1:100 and Alexa Fluor 488-conjugated AffiniPure Goat Anti-Rabbit IgG(H+L)



Immunoprecipitating RPA2 in HeLa whole cell lysate
 Lane 1: Rabbit control IgG (1µg) instead of CSB-PA01555A0Rb in HeLa whole cell lysate. For western blotting, a HRP-conjugated Protein G antibody was used as the secondary antibody (1/2000)
 Lane 2: CSB-PA01555A0Rb (6µg) + HeLa whole cell lysate (500µg)
 Lane 3: HeLa whole cell lysate (10µg)



Western Blot
 Positive WB detected in: A549 whole cell lysate, HeLa whole cell lysate, HepG2 whole cell lysate, HT29 whole cell lysate, Jurkat whole cell lysate, MCF-7 whole cell lysate
 All lanes: RPA2 antibody at 2µg/ml
 Secondary
 Goat polyclonal to rabbit IgG at 1/50000 dilution
 Predicted band size: 30, 31, 39 kDa
 Observed band size: 30 kDa

Usage

For Research Use Only. Not for use in diagnostic or therapeutic procedures.