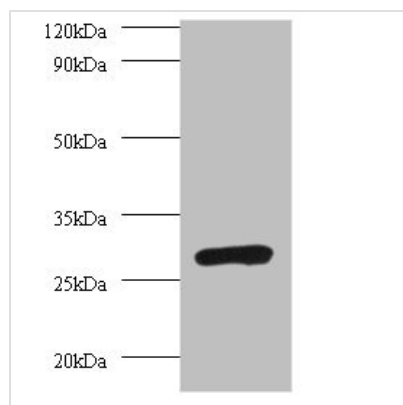




PSMA7 Antibody

Product Code	CSB-PA01335A0Rb
Storage	Upon receipt, store at -20°C or -80°C. Avoid repeated freeze.
Uniprot No.	O14818
Immunogen	Recombinant Human Proteasome subunit alpha type-7 protein (5-232AA)
Raised In	Rabbit
Species Reactivity	Human, Mouse
Tested Applications	ELISA, WB, IHC, IF; Recommended dilution: WB:1:500-1:2000, IHC:1:20-1:200, IF:1:50-1:200
Form	Liquid
Conjugate	Non-conjugated
Storage Buffer	Preservative: 0.03% Proclin 300 Constituents: 50% Glycerol, 0.01M PBS, PH 7.4
Purification Method	>95%, Protein G purified
Isotype	IgG
Clonality	Polyclonal
Alias	Proteasome subunit alpha type-7 (EC 3.4.25.1) (Proteasome subunit RC6-1) (Proteasome subunit XAPC7), PSMA7, HSPC
Immunogen Species	Homo sapiens (Human)
Research Area	Immunology
Target Names	PSMA7

Image



Western blot

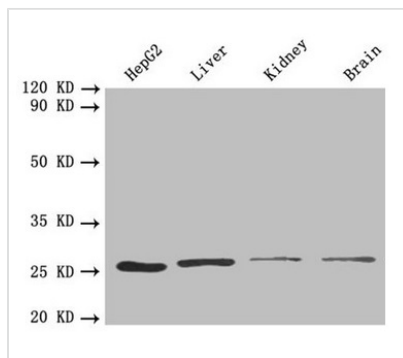
All lanes: PSMA7 antibody at 2µg/ml + 293T whole cell lysate

Secondary

Goat polyclonal to rabbit IgG at 1/10000 dilution

Predicted band size: 28, 21, 17 kDa

Observed band size: 28 kDa



Western blot

All lanes: PSMA7 antibody at 1.6 µg/ml

Lane 1: HepG2 whole cell lysate

Lane 2: Mouse liver tissue

Lane 3: Mouse kidney tissue

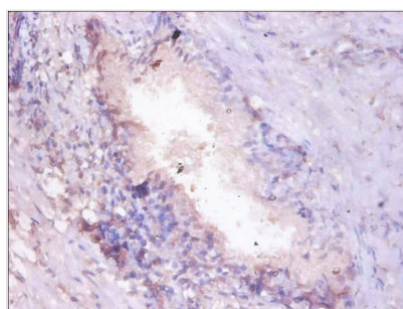
Lane 4: Mouse brain tissue

Secondary

Goat polyclonal to rabbit IgG at 1/10000 dilution

Predicted band size: 28, 21, 17 kDa

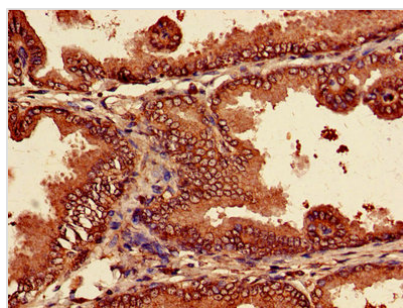
Observed band size: 28 kDa



Immunohistochemistry of paraffin-embedded

human prostate tissue using CSB-

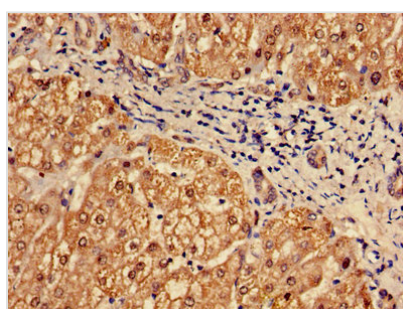
PA01335A0Rb at dilution of 1:100



Immunohistochemistry of paraffin-embedded

human prostate cancer using CSB-

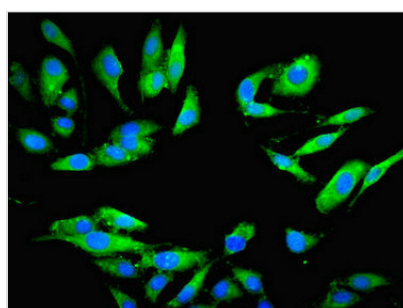
PA01335A0Rb at dilution of 1:100



Immunohistochemistry of paraffin-embedded

human liver tissue using CSB-PA01335A0Rb at

dilution of 1:100



Immunofluorescent analysis of HeLa cells using

CSB-PA01335A0Rb at dilution of 1:100 and

Alexa Fluor 488-conjugated AffiniPure Goat

Anti-Rabbit IgG(H+L)