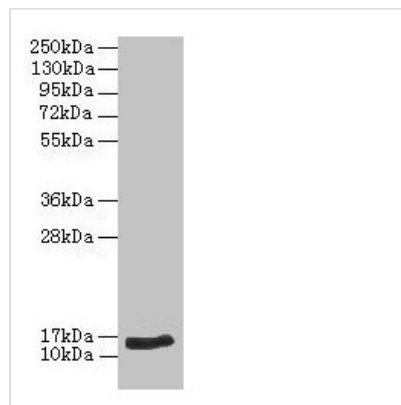




NPPB Antibody

| | |
|----------------------------|---|
| Product Code | CSB-PA07926A0Rb |
| Storage | Upon receipt, store at -20°C or -80°C. Avoid repeated freeze. |
| Uniprot No. | P16860 |
| Immunogen | Recombinant Human Natriuretic peptides B protein (27-102AA) |
| Raised In | Rabbit |
| Species Reactivity | Human |
| Tested Applications | ELISA, WB, IHC; Recommended dilution: WB:1:1000-1:5000, IHC:1:20-1:200 |
| Form | Liquid |
| Conjugate | Non-conjugated |
| Storage Buffer | Preservative: 0.03% Proclin 300 Constituents: 50% Glycerol, 0.01M PBS, PH 7.4 |
| Purification Method | >95%, Protein G purified |
| Isotype | IgG |
| Clonality | Polyclonal |
| Alias | Natriuretic peptides B (Gamma-brain natriuretic peptide) [Cleaved into: Brain natriuretic peptide 32 (BNP(1-32)) (BNP-32); BNP(1-30); BNP(1-29); BNP(1-28); BNP(2-31); BNP(3-32); BNP(3-30); BNP(3-29); BNP(4-32); BNP(4-31); BNP(4-30); BNP(4-29); BNP(4-27); BNP(5-32); BNP(5-31); BNP(5-29)], NPPB |
| Immunogen Species | Homo sapiens (Human) |
| Research Area | Signal Transduction |
| Target Names | NPPB |

Image



Western blot

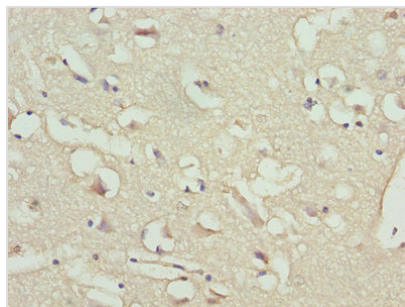
All lanes: NPPB antibody at 2µg/ml + Hela whole cell lysate

Secondary

Goat polyclonal to rabbit IgG at 1/10000 dilution

Predicted band size: 15 kDa

Observed band size: 15 kDa



Immunohistochemistry of paraffin-embedded human brain tissue using CSB-PA07926A0Rb at dilution of 1:100



Immunohistochemistry of paraffin-embedded human heart tissue using CSB-PA07926A0Rb at dilution of 1:100

Usage

For Research Use Only. Not for use in diagnostic or therapeutic procedures.