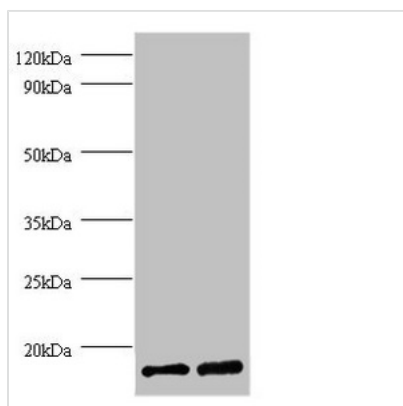




FKBP1A Antibody

| | |
|----------------------------|--|
| Product Code | CSB-PA02325A0Rb |
| Storage | Upon receipt, store at -20°C or -80°C. Avoid repeated freeze. |
| Uniprot No. | P62942 |
| Immunogen | Recombinant Human Peptidyl-prolyl cis-trans isomerase FKBP1A protein (2-103AA) |
| Raised In | Rabbit |
| Species Reactivity | Human |
| Tested Applications | ELISA, WB, IHC, IF; Recommended dilution: WB:1:500-1:2000, IHC:1:20-1:200, IF:1:50-1:200 |
| Form | Liquid |
| Conjugate | Non-conjugated |
| Storage Buffer | Preservative: 0.03% Proclin 300 Constituents: 50% Glycerol, 0.01M PBS, PH 7.4 |
| Purification Method | >95%, Protein G purified |
| Isotype | IgG |
| Clonality | Polyclonal |
| Alias | Peptidyl-prolyl cis-trans isomerase FKBP1A (PPIase FKBP1A) (EC 5.2.1.8) (12 kDa FK506-binding protein) (12 kDa FKBP) (FKBP-12) (Calstabin-1) (FK506-binding protein 1A) (FKBP-1A) (Immunophilin FKBP12) (Rotamase), FKBP1A, FKBP1 FKBP12 |
| Immunogen Species | Homo sapiens (Human) |
| Research Area | Immunology |
| Target Names | FKBP1A |

Image



Western blot

All lanes: FKBP1A antibody at 2µg/ml

Lane 1: EC109 whole cell lysate

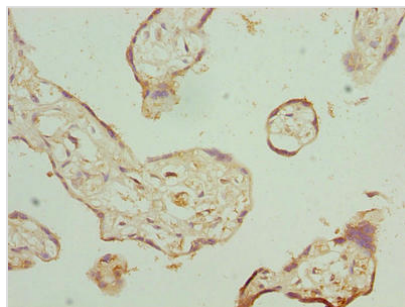
Lane 2: 293T whole cell lysate

Secondary

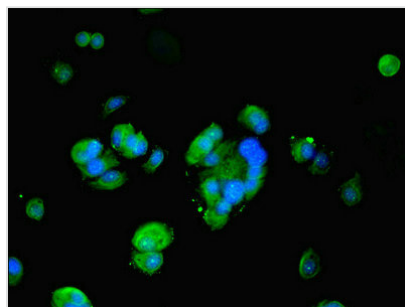
Goat polyclonal to rabbit IgG at 1/15000 dilution

Predicted band size: 12 kDa

Observed band size: 12 kDa



Immunohistochemistry of paraffin-embedded human placenta tissue using CSB-PA02325A0Rb at dilution of 1:100



Immunofluorescent analysis of MCF-7 cells using CSB-PA02325A0Rb at dilution of 1:100 and Alexa Fluor 488-conjugated AffiniPure Goat Anti-Rabbit IgG(H+L)

Usage

For Research Use Only. Not for use in diagnostic or therapeutic procedures.