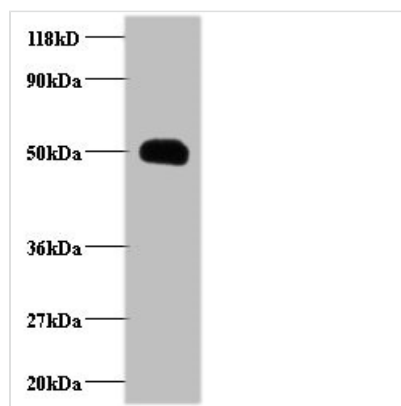




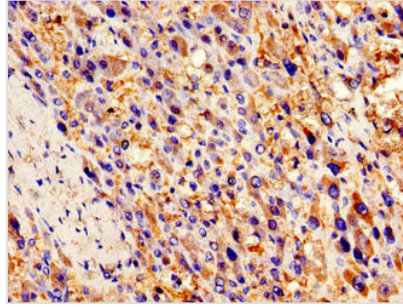
# CCL2 Antibody

<b>Product Code</b>	CSB-PA05865A0Rb
<b>Storage</b>	Upon receipt, store at -20°C or -80°C. Avoid repeated freeze.
<b>Uniprot No.</b>	P13500
<b>Immunogen</b>	Recombinant Human C-C motif chemokine 2 protein (24-99AA)
<b>Raised In</b>	Rabbit
<b>Species Reactivity</b>	Human
<b>Tested Applications</b>	ELISA, WB, IHC, IF; Recommended dilution: WB:1:500-1:2000, IHC:1:20-1:200, IF:1:50-1:200
<b>Form</b>	Liquid
<b>Conjugate</b>	Non-conjugated
<b>Storage Buffer</b>	Preservative: 0.03% Proclin 300 Constituents: 50% Glycerol, 0.01M PBS, PH 7.4
<b>Purification Method</b>	>95%, Protein G purified
<b>Isotype</b>	IgG
<b>Clonality</b>	Polyclonal
<b>Alias</b>	C-C motif chemokine 2 (HC11) (Monocyte chemoattractant protein 1) (Monocyte chemotactic and activating factor) (MCAF) (Monocyte chemotactic protein 1) (MCP-1) (Monocyte secretory protein JE) (Small-inducible cytokine A2), CCL2, MCP1 SCYA2
<b>Immunogen Species</b>	Homo sapiens (Human)
<b>Research Area</b>	Immunology
<b>Target Names</b>	CCL2

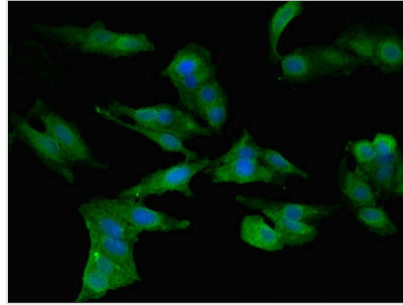
## Image



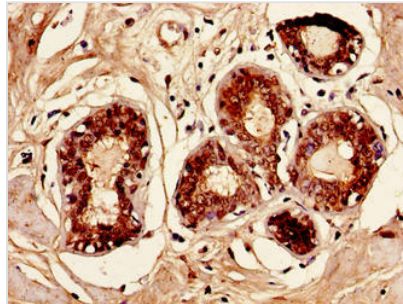
Western blot  
 All lanes: CCL2 antibody at 2µg/ml + EC109 whole cell lysate  
 Secondary  
 Goat polyclonal to rabbit IgG at 1/15000 dilution  
 Predicted band size: 12 kDa  
 Observed band size: 50 kDa



Immunohistochemistry of paraffin-embedded human liver cancer using CSB-PA05865A0Rb at dilution of 1:100



Immunofluorescent analysis of HeLa cells using CSB-PA05865A0Rb at dilution of 1:100 and Alexa Fluor 488-conjugated AffiniPure Goat Anti-Rabbit IgG(H+L)



Immunohistochemistry of paraffin-embedded human breast cancer using CSB-PA05865A0Rb at dilution of 1:100

**Usage**

For Research Use Only. Not for use in diagnostic or therapeutic procedures.