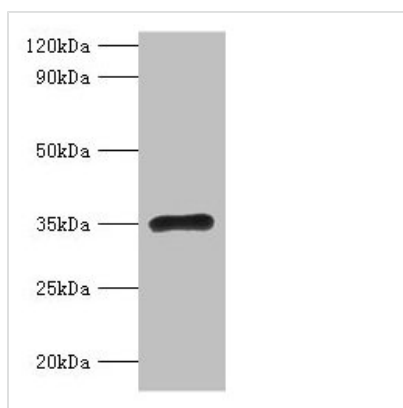




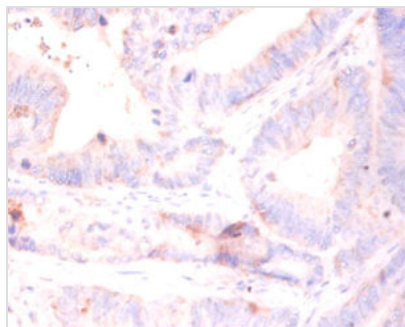
RPL5 Antibody

| | |
|----------------------------|--|
| Product Code | CSB-PA02495A0Rb |
| Storage | Upon receipt, store at -20°C or -80°C. Avoid repeated freeze. |
| Uniprot No. | P46777 |
| Immunogen | Recombinant Human 60S ribosomal protein L5 protein (2-297AA) |
| Raised In | Rabbit |
| Species Reactivity | Human |
| Tested Applications | ELISA, WB, IHC; Recommended dilution: WB:1:1000-1:5000, IHC:1:20-1:200 |
| Form | Liquid |
| Conjugate | Non-conjugated |
| Storage Buffer | Preservative: 0.03% Proclin 300 Constituents: 50% Glycerol, 0.01M PBS, PH 7.4 |
| Purification Method | >95%, Protein G purified |
| Isotype | IgG |
| Clonality | Polyclonal |
| Alias | 60S ribosomal protein L5 (Large ribosomal subunit protein uL18), RPL5 |
| Immunogen Species | Homo sapiens (Human) |
| Research Area | Epigenetics and Nuclear Signaling |
| Target Names | RPL5 |

Image



Western blot
All lanes: RPL5 antibody at 2µg/ml + EC109 whole cell lysate
Secondary
Goat polyclonal to rabbit IgG at 1/15000 dilution
Predicted band size: 35 kDa
Observed band size: 35 kDa



Immunohistochemistry of paraffin-embedded human colon cancer using CSB-PA02495A0Rb at dilution of 1:50