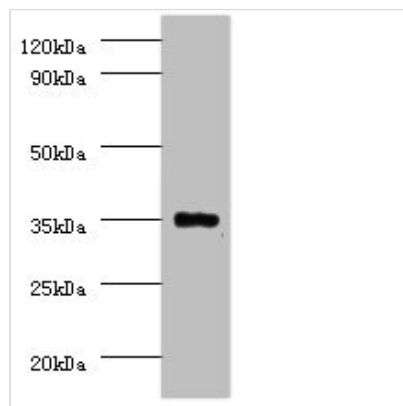




PPP2CB Antibody

Product Code	CSB-PA00985A0Rb
Storage	Upon receipt, store at -20°C or -80°C. Avoid repeated freeze.
Uniprot No.	P62714
Immunogen	Recombinant Human Serine/threonine-protein phosphatase 2A catalytic subunit beta isoform protein (1-309AA)
Raised In	Rabbit
Species Reactivity	Human
Tested Applications	ELISA, WB, IHC, IF; Recommended dilution: WB:1:500-1:2000, IHC:1:100-1:500, IF:1:50-1:200
Form	Liquid
Conjugate	Non-conjugated
Storage Buffer	Preservative: 0.03% Proclin 300 Constituents: 50% Glycerol, 0.01M PBS, PH 7.4
Purification Method	>95%, Protein G purified
Isotype	IgG
Clonality	Polyclonal
Alias	Serine/threonine-protein phosphatase 2A catalytic subunit beta isoform (PP2A-beta) (EC 3.1.3.16), PPP2CB
Immunogen Species	Homo sapiens (Human)
Research Area	Signal Transduction
Target Names	PPP2CB

Image



Western blot

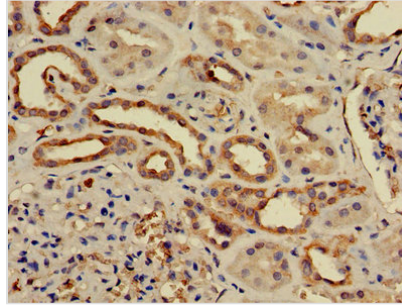
All lanes: Serine/threonine-protein phosphatase 2A catalytic subunit beta isoform Antibody at 2μg/ml + EC109 whole cell lysate

Secondary

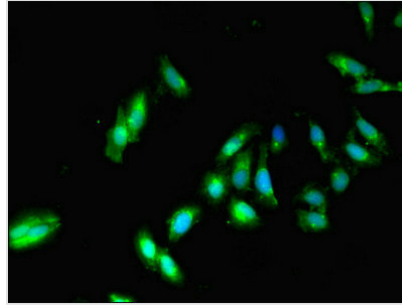
Goat polyclonal to rabbit IgG at 1/15000 dilution

Predicted band size: 34 kDa

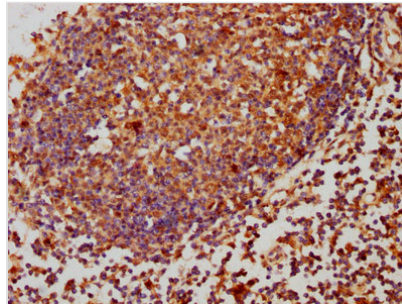
Observed band size: 34 kDa



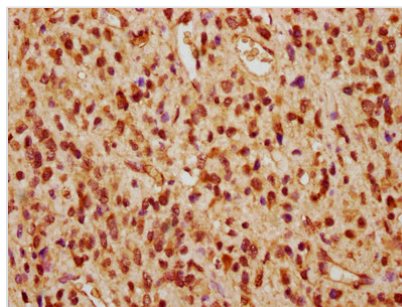
Immunohistochemistry of paraffin-embedded human kidney tissue using CSB-PA00985A0Rb at dilution of 1:50



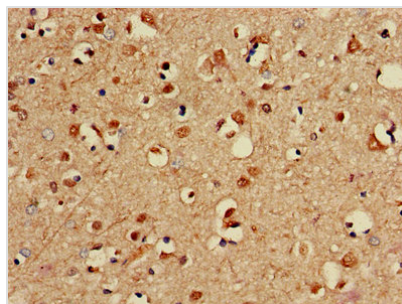
Immunofluorescent analysis of Hela cells using CSB-PA00985A0Rb at dilution of 1:100 and Alexa Fluor 488-conjugated AffiniPure Goat Anti-Rabbit IgG(H+L)



IHC image of CSB-PA00985A0Rb diluted at 1:260 and staining in paraffin-embedded human lymph node tissue performed on a Leica BondTM system. After dewaxing and hydration, antigen retrieval was mediated by high pressure in a citrate buffer (pH 6.0). Section was blocked with 10% normal goat serum 30min at RT. Then primary antibody (1% BSA) was incubated at 4°C overnight. The primary is detected by a biotinylated secondary antibody and visualized using an HRP conjugated SP system.



IHC image of CSB-PA00985A0Rb diluted at 1:260 and staining in paraffin-embedded human glioma performed on a Leica BondTM system. After dewaxing and hydration, antigen retrieval was mediated by high pressure in a citrate buffer (pH 6.0). Section was blocked with 10% normal goat serum 30min at RT. Then primary antibody (1% BSA) was incubated at 4°C overnight. The primary is detected by a biotinylated secondary antibody and visualized using an HRP conjugated SP system.



Immunohistochemistry of paraffin-embedded human brain tissue using CSB-PA00985A0Rb at dilution of 1:100