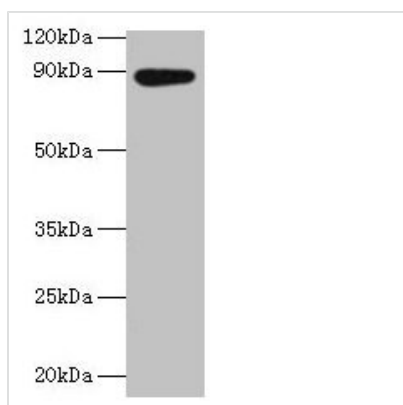




AFG3L2 Antibody

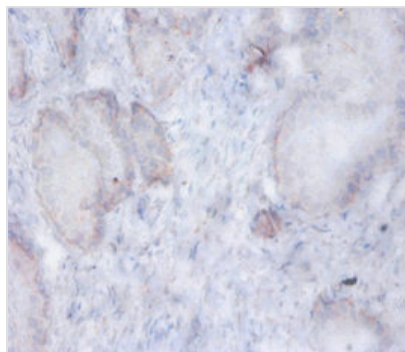
Product Code	CSB-PA04005A0Rb
Storage	Upon receipt, store at -20°C or -80°C. Avoid repeated freeze.
Uniprot No.	Q9Y4W6
Immunogen	Recombinant Human AFG3-like protein 2 protein (550-759AA)
Raised In	Rabbit
Species Reactivity	Human
Tested Applications	ELISA, WB, IHC; Recommended dilution: WB:1:1000-1:5000, IHC:1:20-1:200
Form	Liquid
Conjugate	Non-conjugated
Storage Buffer	Preservative: 0.03% Proclin 300 Constituents: 50% Glycerol, 0.01M PBS, PH 7.4
Purification Method	>95%, Protein G purified
Isotype	IgG
Clonality	Polyclonal
Alias	AFG3-like protein 2 (EC 3.4.24.-) (Paraplegin-like protein), AFG3L2
Immunogen Species	Homo sapiens (Human)
Research Area	Signal Transduction
Target Names	AFG3L2

Image



Western blot

All lanes: AFG3L2 antibody at 2µg/ml + EC109 whole cell lysate
Secondary
Goat polyclonal to rabbit IgG at 1/15000 dilution
Predicted band size: 89 kDa
Observed band size: 89 kDa



Immunohistochemistry of paraffin-embedded human prostate tissue using CSB-PA04005A0Rb at dilution of 1:100

Usage

For Research Use Only. Not for use in diagnostic or therapeutic procedures.