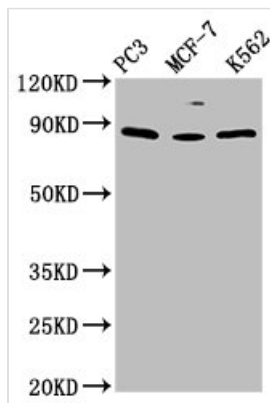




# TRIM28 Antibody

<b>Product Code</b>	CSB-PA05254A0Rb
<b>Storage</b>	Upon receipt, store at -20°C or -80°C. Avoid repeated freeze.
<b>Uniprot No.</b>	Q13263
<b>Immunogen</b>	Recombinant Human Transcription intermediary factor 1-beta protein (22-291AA)
<b>Raised In</b>	Rabbit
<b>Species Reactivity</b>	Human
<b>Tested Applications</b>	ELISA, WB, IHC, IP; Recommended dilution: WB:1:500-1:5000, IHC:1:20-1:200, IP:1:200-1:2000
<b>Form</b>	Liquid
<b>Conjugate</b>	Non-conjugated
<b>Storage Buffer</b>	Preservative: 0.03% Proclin 300 Constituents: 50% Glycerol, 0.01M PBS, PH 7.4
<b>Purification Method</b>	>95%, Protein G purified
<b>Isotype</b>	IgG
<b>Clonality</b>	Polyclonal
<b>Alias</b>	Transcription intermediary factor 1-beta (TIF1-beta) (E3 SUMO-protein ligase TRIM28) (EC 2.3.2.27) (KRAB-associated protein 1) (KAP-1) (KRAB-interacting protein 1) (KRIP-1) (Nuclear corepressor KAP-1) (RING finger protein 96) (RING-type E3 ubiquitin transferase TIF1-beta) (Tripartite motif-containing protein 28), TRIM28, KAP1 RNF96 TIF1B
<b>Immunogen Species</b>	Homo sapiens (Human)
<b>Research Area</b>	Epigenetics and Nuclear Signaling
<b>Target Names</b>	TRIM28

## Image



### Western Blot

Positive WB detected in: PC-3 whole cell lysate, MCF-7 whole cell lysate, K562 whole cell lysate

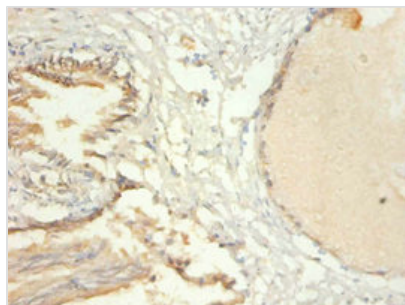
All lanes: TRIM28 antibody at 1.5µg/ml

Secondary

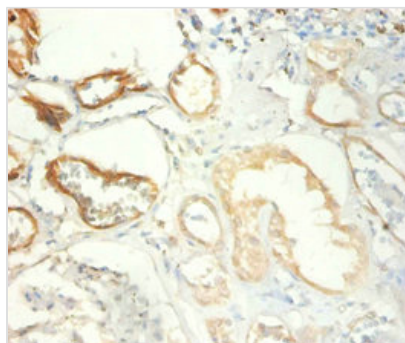
Goat polyclonal to rabbit IgG at 1/50000 dilution

Predicted band size: 89, 80 kDa

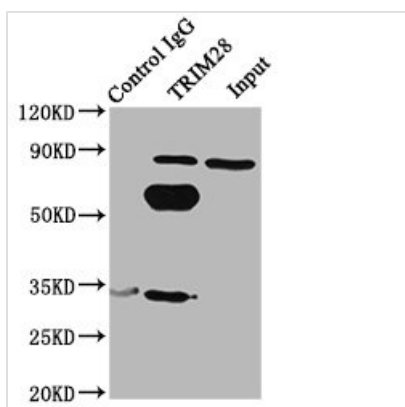
Observed band size: 89 kDa



Immunohistochemistry of paraffin-embedded human prostate tissue using CSB-PA05254A0Rb at dilution of 1:100



Immunohistochemistry of paraffin-embedded human kidney tissue using CSB-PA05254A0Rb at dilution of 1:100



Immunoprecipitating TRIM28 in HeLa whole cell lysate

Lane 1: Rabbit control IgG(1μg)instead of CSB-PA05254A0Rb in HeLa whole cell lysate. For western blotting, a HRP-conjugated Protein G antibody was used as the secondary antibody (1/2000)

Lane 2: CSB-PA05254A0Rb(6μg)+ HeLa whole cell lysate(500μg)

Lane 3: HeLa whole cell lysate (10μg)

## Usage

For Research Use Only. Not for use in diagnostic or therapeutic procedures.