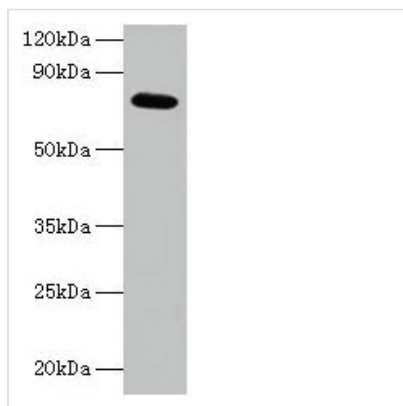




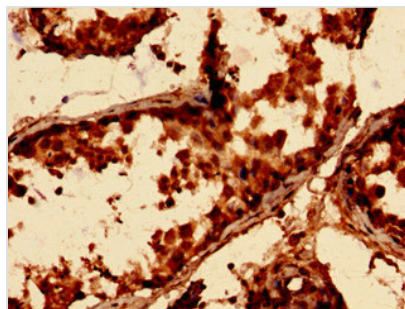
ARPC3 Antibody

Product Code	CSB-PA03324A0Rb
Storage	Upon receipt, store at -20°C or -80°C. Avoid repeated freeze.
Uniprot No.	O15145
Immunogen	Recombinant Human Actin-related protein 2/3 complex subunit 3 protein (2-175AA)
Raised In	Rabbit
Species Reactivity	Human
Tested Applications	ELISA, WB, IHC, IF; Recommended dilution: WB:1:500-1:5000, IHC:1:20-1:200, IF:1:50-1:200
Form	Liquid
Conjugate	Non-conjugated
Storage Buffer	Preservative: 0.03% Proclin 300 Constituents: 50% Glycerol, 0.01M PBS, PH 7.4
Purification Method	>95%, Protein G purified
Isotype	IgG
Clonality	Polyclonal
Alias	Actin-related protein 2/3 complex subunit 3 (Arp2/3 complex 21 kDa subunit) (p21-ARC), ARPC3, ARC21
Immunogen Species	Homo sapiens (Human)
Research Area	Signal Transduction
Target Names	ARPC3

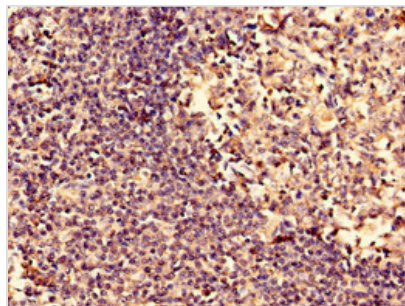
Image



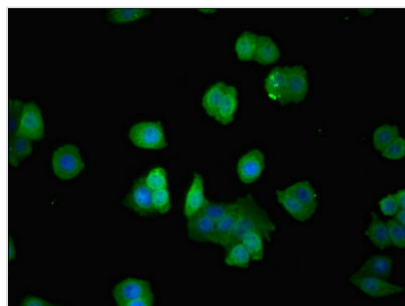
Western blot
 All lanes: ARPC3 antibody at 2µg/ml + 293T whole cell lysate
 Secondary
 Goat polyclonal to rabbit IgG at 1/15000 dilution
 Predicted band size: 21 kDa
 Observed band size: 75 kDa



Immunohistochemistry analysis of human testis tissue using CSB-PA03324A0Rb at dilution of 1:100



Immunohistochemistry analysis of human tonsil tissue using CSB-PA03324A0Rb at dilution of 1:100



Immunofluorescent analysis of PC-3 cells using CSB-PA03324A0Rb at dilution of 1:100 and Alexa Fluor 488-conjugated AffiniPure Goat Anti-Rabbit IgG(H+L)

Usage

For Research Use Only. Not for use in diagnostic or therapeutic procedures.