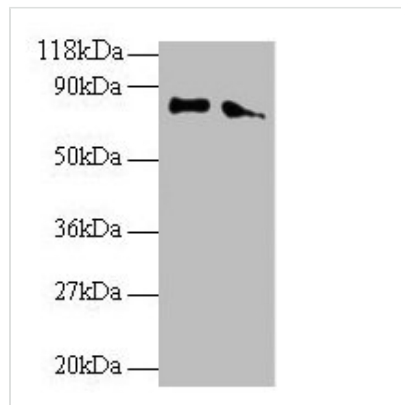




ERP29 Antibody

Product Code	CSB-PA05344A0Rb
Storage	Upon receipt, store at -20°C or -80°C. Avoid repeated freeze.
Uniprot No.	P30040
Immunogen	Recombinant Human Endoplasmic reticulum resident protein 29 protein (40-251AA)
Raised In	Rabbit
Species Reactivity	Human
Tested Applications	ELISA, WB, IHC; Recommended dilution: WB:1:1000-1:5000, IHC:1:20-1:200
Form	Liquid
Conjugate	Non-conjugated
Storage Buffer	Preservative: 0.03% Proclin 300 Constituents: 50% Glycerol, 0.01M PBS, PH 7.4
Purification Method	>95%, Protein G purified
Isotype	IgG
Clonality	Polyclonal
Alias	Endoplasmic reticulum resident protein 29 (ERp29) (Endoplasmic reticulum resident protein 28) (ERp28) (Endoplasmic reticulum resident protein 31) (ERp31), ERP29, C12orf8 ERP28
Immunogen Species	Homo sapiens (Human)
Research Area	Signal Transduction
Target Names	ERP29

Image



Western blot

All lanes: ERP29 antibody at 2µg/ml

Lane 1: EC109 whole cell lysate

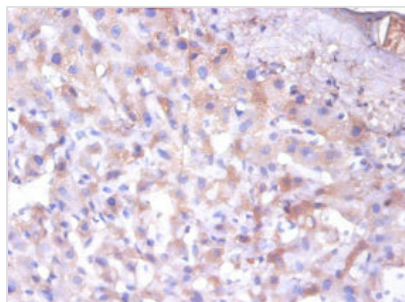
Lane 2: 293T whole cell lysate

Secondary

Goat polyclonal to rabbit IgG at 1/15000 dilution

Predicted band size: 29, 6 kDa

Observed band size: 80 kDa



Immunohistochemistry of paraffin-embedded human liver tissue using CSB-PA05344A0Rb at dilution of 1:100

Usage

For Research Use Only. Not for use in diagnostic or therapeutic procedures.