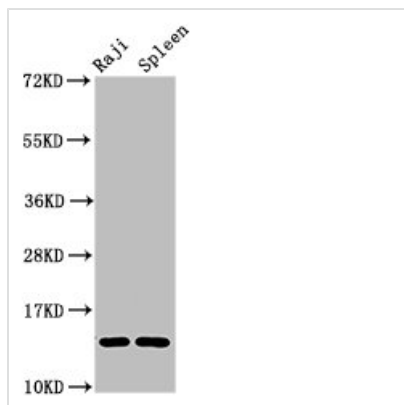




GABARAPL2 Antibody

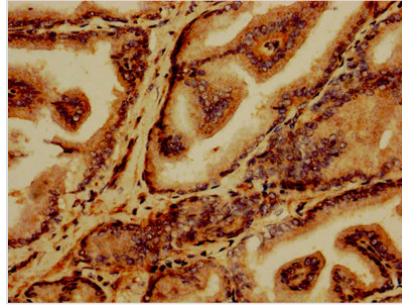
Product Code	CSB-PA03484A0Rb
Storage	Upon receipt, store at -20°C or -80°C. Avoid repeated freeze.
Uniprot No.	P60520
Immunogen	Recombinant Human Gamma-aminobutyric acid receptor-associated protein-like 2 protein (1-117AA)
Raised In	Rabbit
Species Reactivity	Human, Rat
Tested Applications	ELISA, WB, IHC; Recommended dilution: WB:1:500-1:5000, IHC:1:1000-1:2000
Form	Liquid
Conjugate	Non-conjugated
Storage Buffer	Preservative: 0.03% Proclin 300 Constituents: 50% Glycerol, 0.01M PBS, PH 7.4
Purification Method	>95%, Protein G purified
Isotype	IgG
Clonality	Polyclonal
Alias	Gamma-aminobutyric acid receptor-associated protein-like 2 (GABA(A) receptor-associated protein-like 2) (Ganglioside expression factor 2) (GEF-2) (General protein transport factor p16) (Golgi-associated ATPase enhancer of 16 kDa) (GATE-16) (MAP1 light chain 3-related protein), GABARAPL2, FLC3A GEF2
Immunogen Species	Homo sapiens (Human)
Research Area	Others
Target Names	GABARAPL2

Image

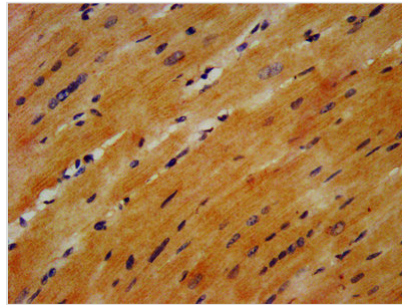


Western Blot

Positive WB detected in: Raji whole cell lysate, Rat spleen tissue
 All lanes: GABARAPL2 antibody at 4µg/ml
 Secondary
 Goat polyclonal to rabbit IgG at 1/50000 dilution
 Predicted band size: 14 kDa
 Observed band size: 14 kDa



IHC image of CSB-PA03484A0Rb diluted at 1:1200 and staining in paraffin-embedded human prostate tissue performed on a Leica Bond™ system. After dewaxing and hydration, antigen retrieval was mediated by high pressure in a citrate buffer (pH 6.0). Section was blocked with 10% normal goat serum 30min at RT. Then primary antibody (1% BSA) was incubated at 4°C overnight. The primary is detected by a biotinylated secondary antibody and visualized using an HRP conjugated SP system.



IHC image of CSB-PA03484A0Rb diluted at 1:1200 and staining in paraffin-embedded human heart tissue performed on a Leica Bond™ system. After dewaxing and hydration, antigen retrieval was mediated by high pressure in a citrate buffer (pH 6.0). Section was blocked with 10% normal goat serum 30min at RT. Then primary antibody (1% BSA) was incubated at 4°C overnight. The primary is detected by a biotinylated secondary antibody and visualized using an HRP conjugated SP system.

Usage

For Research Use Only. Not for use in diagnostic or therapeutic procedures.