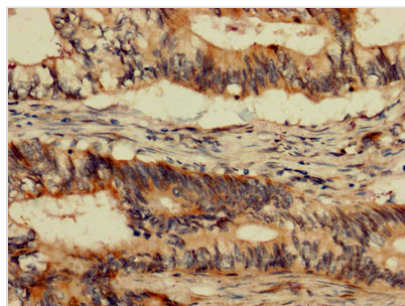




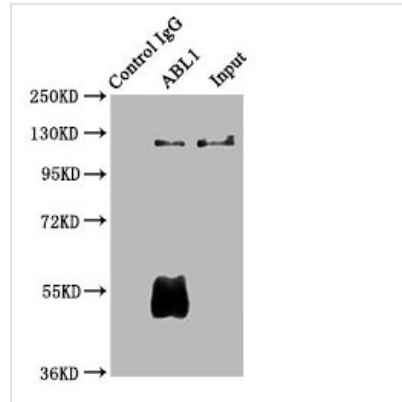
ABL1 Antibody

Product Code	CSB-PA04355A0Rb
Storage	Upon receipt, store at -20°C or -80°C. Avoid repeated freeze.
Uniprot No.	P00519
Immunogen	Recombinant Human Tyrosine-protein kinase ABL1 protein (4-194AA)
Raised In	Rabbit
Species Reactivity	Human
Tested Applications	ELISA, IHC, IP; Recommended dilution: IHC:1:1000-1:2000, IP:1:200-1:2000
Form	Liquid
Conjugate	Non-conjugated
Storage Buffer	Preservative: 0.03% Proclin 300 Constituents: 50% Glycerol, 0.01M PBS, PH 7.4
Purification Method	>95%, Protein G purified
Isotype	IgG
Clonality	Polyclonal
Alias	Tyrosine-protein kinase ABL1 (EC 2.7.10.2) (Abelson murine leukemia viral oncogene homolog 1) (Abelson tyrosine-protein kinase 1) (Proto-oncogene c-Abl) (p150), ABL1, ABL JTK7
Immunogen Species	Homo sapiens (Human)
Research Area	Signal Transduction
Target Names	ABL1

Image



IHC image of CSB-PA04355A0Rb diluted at 1:1200 and staining in paraffin-embedded human colon cancer performed on a Leica BondTM system. After dewaxing and hydration, antigen retrieval was mediated by high pressure in a citrate buffer (pH 6.0). Section was blocked with 10% normal goat serum 30min at RT. Then primary antibody (1% BSA) was incubated at 4°C overnight. The primary is detected by a biotinylated secondary antibody and visualized using an HRP conjugated SP system.



Immunoprecipitating ABL1 in HeLa whole cell lysate

Lane 1: Rabbit control IgG (1 μ g) instead of CSB-PA04355A0Rb in HeLa whole cell lysate. For western blotting, a HRP-conjugated Protein G antibody was used as the secondary antibody (1/2000)

Lane 2: CSB-PA04355A0Rb (6 μ g) + HeLa whole cell lysate (500 μ g)

Lane 3: HeLa whole cell lysate (10 μ g)

Usage

For Research Use Only. Not for use in diagnostic or therapeutic procedures.