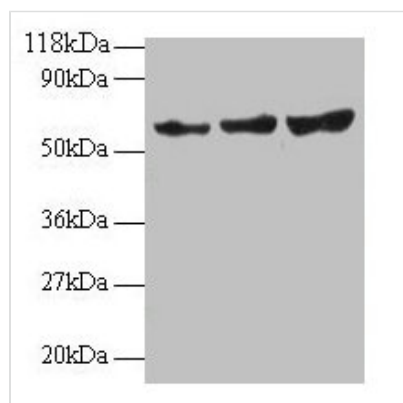




TIMP2 Antibody

| | |
|----------------------------|--|
| Product Code | CSB-PA07405A0Rb |
| Storage | Upon receipt, store at -20°C or -80°C. Avoid repeated freeze. |
| Uniprot No. | P16035 |
| Immunogen | Recombinant Human Metalloproteinase inhibitor 2 protein (30-220AA) |
| Raised In | Rabbit |
| Species Reactivity | Human |
| Tested Applications | ELISA, WB; Recommended dilution: WB:1:1000-1:5000 |
| Form | Liquid |
| Conjugate | Non-conjugated |
| Storage Buffer | Preservative: 0.03% Proclin 300 Constituents: 50% Glycerol, 0.01M PBS, PH 7.4 |
| Purification Method | >95%, Protein G purified |
| Isotype | IgG |
| Clonality | Polyclonal |
| Alias | Metalloproteinase inhibitor 2 (CSC-21K) (Tissue inhibitor of metalloproteinases 2) (TIMP-2), TIMP2 |
| Immunogen Species | Homo sapiens (Human) |
| Research Area | Cardiovascular |
| Target Names | TIMP2 |

Image



Western blot

All lanes: TIMP2 antibody at 2µg/ml

Lane 1: EC109 whole cell lysate

Lane 2: 293T whole cell lysate

Secondary

Goat polyclonal to rabbit IgG at 1/15000 dilution

Predicted band size: 25 kDa

Observed band size: 60 kDa