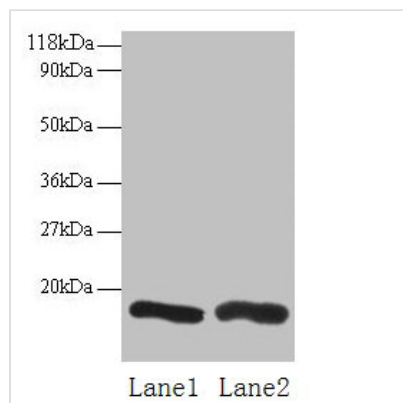




CHMP2A Antibody

Product Code	CSB-PA04524A0Rb
Storage	Upon receipt, store at -20°C or -80°C. Avoid repeated freeze.
Uniprot No.	O43633
Immunogen	Recombinant Human Charged multivesicular body protein 2a protein (1-222AA)
Raised In	Rabbit
Species Reactivity	Human
Tested Applications	ELISA, WB, IHC; Recommended dilution: WB:1:1000-1:5000, IHC:1:20-1:200
Form	Liquid
Conjugate	Non-conjugated
Storage Buffer	Preservative: 0.03% Proclin 300 Constituents: 50% Glycerol, 0.01M PBS, PH 7.4
Purification Method	>95%, Protein G purified
Isotype	IgG
Clonality	Polyclonal
Alias	Charged multivesicular body protein 2a (Chromatin-modifying protein 2a) (CHMP2a) (Putative breast adenocarcinoma marker BC-2) (Vacuolar protein sorting-associated protein 2-1) (Vps2-1) (hVps2-1), CHMP2A, BC2 CHMP2
Immunogen Species	Homo sapiens (Human)
Research Area	Signal Transduction
Target Names	CHMP2A

Image



Western blot

All lanes: CHMP2A antibody at 2µg/ml

Lane 1: EC109 whole cell lysate

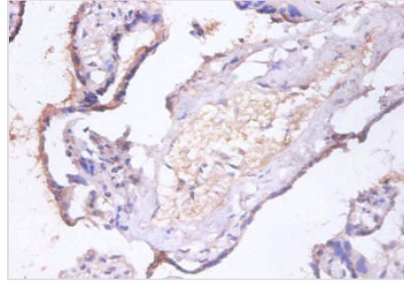
Lane 2: 293T whole cell lysate

Secondary

Goat polyclonal to rabbit IgG at 1/15000 dilution

Predicted band size: 26 kDa

Observed band size: 16 kDa



Immunohistochemistry of paraffin-embedded human placenta tissue using CSB-PA04524A0Rb at dilution of 1:100

Usage

For Research Use Only. Not for use in diagnostic or therapeutic procedures.