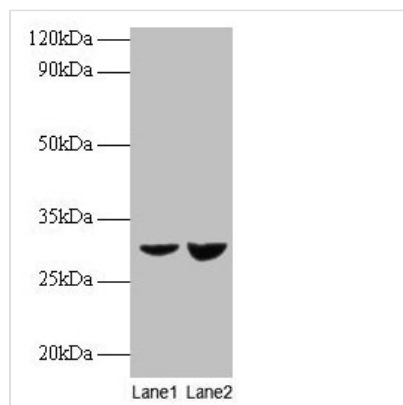




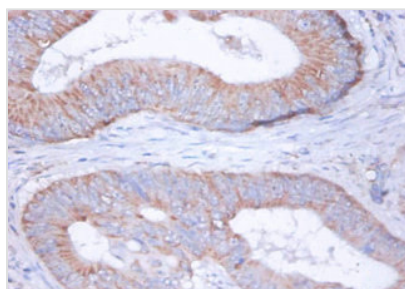
# UQCRFS1 Antibody

<b>Product Code</b>	CSB-PA04645A0Rb
<b>Storage</b>	Upon receipt, store at -20°C or -80°C. Avoid repeated freeze.
<b>Uniprot No.</b>	P47985
<b>Immunogen</b>	Recombinant Human Cytochrome b-c1 complex subunit Rieske, mitochondrial protein (79-274AA)
<b>Raised In</b>	Rabbit
<b>Species Reactivity</b>	Human
<b>Tested Applications</b>	ELISA, WB, IHC; Recommended dilution: WB:1:1000-1:5000, IHC:1:20-1:200
<b>Form</b>	Liquid
<b>Conjugate</b>	Non-conjugated
<b>Storage Buffer</b>	Preservative: 0.03% Proclin 300 Constituents: 50% Glycerol, 0.01M PBS, PH 7.4
<b>Purification Method</b>	>95%, Protein G purified
<b>Isotype</b>	IgG
<b>Clonality</b>	Polyclonal
<b>Alias</b>	Cytochrome b-c1 complex subunit Rieske, mitochondrial (EC 1.10.2.2) (Complex III subunit 5) (Cytochrome b-c1 complex subunit 5) (Rieske iron-sulfur protein) (RISP) (Rieske protein UQCRFS1) (Ubiquinol-cytochrome c reductase iron-sulfur subunit) [Cleaved into: Cytochrome b-c1 complex subunit 9 (Su9) (Subunit 9) (8 kDa subunit 9) (Complex III subunit IX) (Cytochrome b-c1 complex subunit 11) (Ubiquinol-cytochrome c reductase 8 kDa protein)], UQCRFS1
<b>Immunogen Species</b>	Homo sapiens (Human)
<b>Research Area</b>	Microbiology
<b>Target Names</b>	UQCRFS1

## Image



Western blot  
All lanes: UQCRFS1 antibody at 2µg/ml  
Lane 1: EC109 whole cell lysate  
Lane 2: 293T whole cell lysate  
Secondary  
Goat polyclonal to rabbit IgG at 1/15000 dilution  
Predicted band size: 30 kDa  
Observed band size: 30 kDa



Immunohistochemistry of paraffin-embedded human colon cancer using CSB-PA04645A0Rb at dilution of 1:100