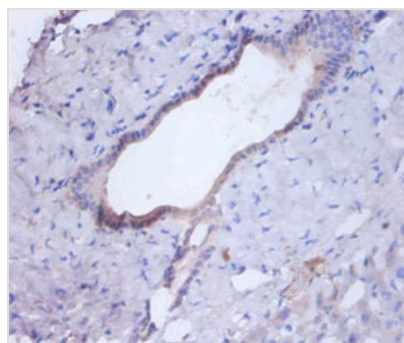




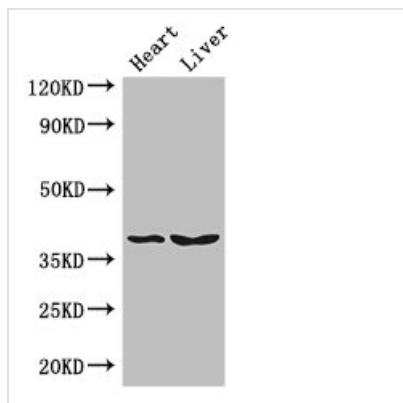
CTSB Antibody

| | |
|----------------------------|--|
| Product Code | CSB-PA06974A0Rb |
| Storage | Upon receipt, store at -20°C or -80°C. Avoid repeated freeze. |
| Uniprot No. | P07858 |
| Immunogen | Recombinant Human Cathepsin B protein (82-333AA) |
| Raised In | Rabbit |
| Species Reactivity | Human, Mouse |
| Tested Applications | ELISA, WB, IHC, IF; Recommended dilution: WB:1:1000-1:5000, IHC:1:20-1:200, IF:1:50-1:200 |
| Form | Liquid |
| Conjugate | Non-conjugated |
| Storage Buffer | Preservative: 0.03% Proclin 300 Constituents: 50% Glycerol, 0.01M PBS, PH 7.4 |
| Purification Method | >95%, Protein G purified |
| Isotype | IgG |
| Clonality | Polyclonal |
| Alias | Cathepsin B (EC 3.4.22.1) (APP secretase) (APPS) (Cathepsin B1) [Cleaved into: Cathepsin B light chain; Cathepsin B heavy chain], CTSB, CPSB |
| Immunogen Species | Homo sapiens (Human) |
| Research Area | Neuroscience |
| Target Names | CTSB |

Image



Immunohistochemistry of paraffin-embedded human liver tissue using CSB-PA06974A0Rb at dilution of 1:100



Western Blot

Positive WB detected in: Mouse heart tissue,
Mouse liver tissue

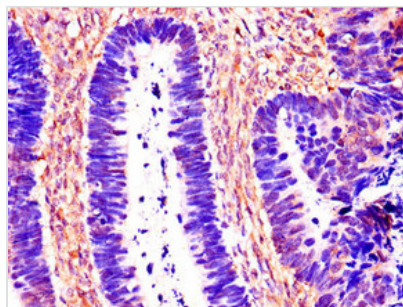
All lanes: CTSB antibody at 3μg/ml

Secondary

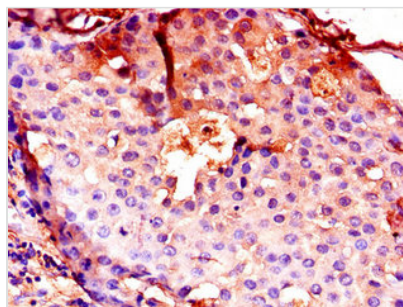
Goat polyclonal to rabbit IgG at 1/50000 dilution

Predicted band size: 38 kDa

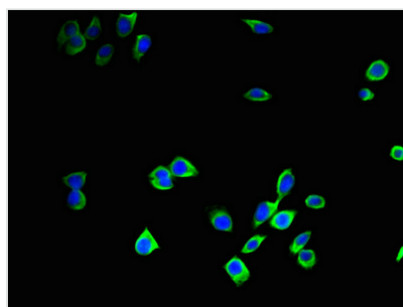
Observed band size: 38 kDa



Immunohistochemistry of paraffin-embedded
human ovarian cancer using CSB-
PA06974A0Rb at dilution of 1:100



Immunohistochemistry of paraffin-embedded
human breast cancer using CSB-PA06974A0Rb
at dilution of 1:100



Immunofluorescent analysis of A375 cells using
CSB-PA06974A0Rb at dilution of 1:100 and
Alexa Fluor 488-conjugated AffiniPure Goat
Anti-Rabbit IgG(H+L)