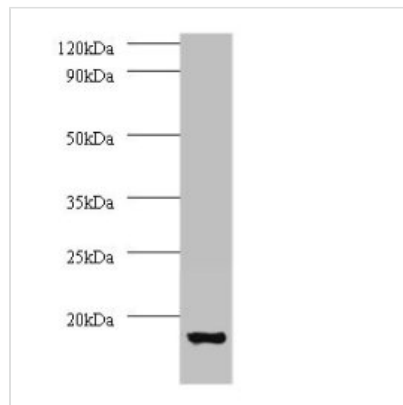




ATP6V1G1 Antibody

Product Code	CSB-PA00135A0Rb
Storage	Upon receipt, store at -20°C or -80°C. Avoid repeated freeze.
Uniprot No.	O75348
Immunogen	Recombinant Human V-type proton ATPase subunit G 1 protein (2-118AA)
Raised In	Rabbit
Species Reactivity	Human
Tested Applications	ELISA, WB, IHC, IF; Recommended dilution: WB:1:1000-1:5000, IHC:1:20-1:200, IF:1:50-1:200
Form	Liquid
Conjugate	Non-conjugated
Storage Buffer	Preservative: 0.03% Proclin 300 Constituents: 50% Glycerol, 0.01M PBS, PH 7.4
Purification Method	>95%, Protein G purified
Isotype	IgG
Clonality	Polyclonal
Alias	V-type proton ATPase subunit G 1 (V-ATPase subunit G 1) (V-ATPase 13 kDa subunit 1) (Vacuolar proton pump subunit G 1) (Vacuolar proton pump subunit M16), ATP6V1G1, ATP6G ATP6G1 ATP6J
Immunogen Species	Homo sapiens (Human)
Research Area	Signal Transduction
Target Names	ATP6V1G1

Image



Western blot

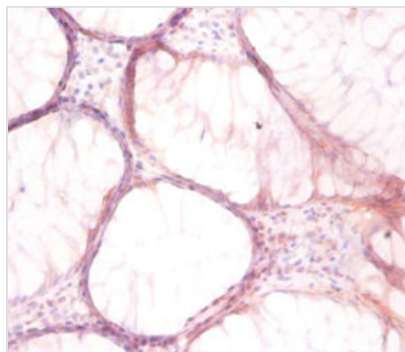
All lanes: V-type proton ATPase subunit G 1 antibody at 2µg/ml + 293T whole cell lysate

Secondary

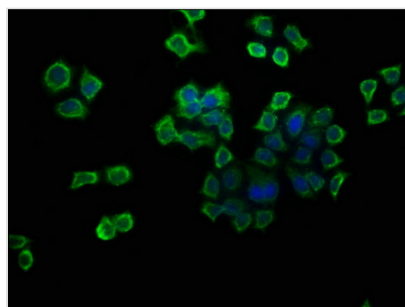
Goat polyclonal to rabbit IgG at 1/15000 dilution

Predicted band size: 14 kDa

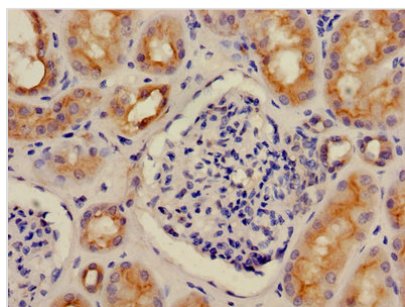
Observed band size: 14 kDa



Immunohistochemistry of paraffin-embedded human colon cancer using CSB-PA00135A0Rb at dilution of 1:50



Immunofluorescence staining of PC-3 cells with CSB-PA00135A0Rb at 1:133, counter-stained with DAPI. The cells were fixed in 4% formaldehyde, permeabilized using 0.2% Triton X-100 and blocked in 10% normal Goat Serum. The cells were then incubated with the antibody overnight at 4°C. The secondary antibody was Alexa Fluor 488-conjugated AffiniPure Goat Anti-Rabbit IgG(H+L).



Immunohistochemistry of paraffin-embedded human kidney tissue using CSB-PA00135A0Rb at dilution of 1:100

Usage

For Research Use Only. Not for use in diagnostic or therapeutic procedures.