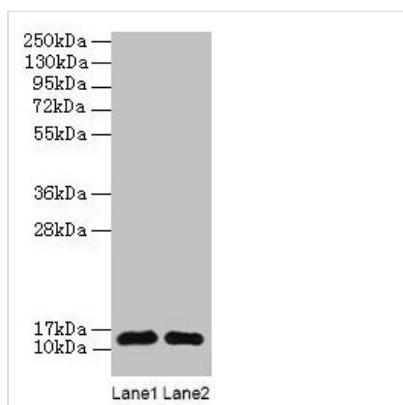




RPL36AL Antibody

Product Code	CSB-PA01805A0Rb
Storage	Upon receipt, store at -20°C or -80°C. Avoid repeated freeze.
Uniprot No.	Q969Q0
Immunogen	Recombinant Human 60S ribosomal protein L36a-like protein (1-106AA)
Raised In	Rabbit
Species Reactivity	Human
Tested Applications	ELISA, WB; Recommended dilution: WB:1:500-1:5000
Form	Liquid
Conjugate	Non-conjugated
Storage Buffer	Preservative: 0.03% Proclin 300 Constituents: 50% Glycerol, 0.01M PBS, PH 7.4
Purification Method	>95%, Protein G purified
Isotype	IgG
Clonality	Polyclonal
Alias	60S ribosomal protein L36a-like (Large ribosomal subunit protein eL42-like), RPL36AL
Immunogen Species	Homo sapiens (Human)
Research Area	Others
Target Names	RPL36AL

Image



Western blot
 All lanes: RPL36AL antibody at 2µg/ml
 Lane 1: EC109 whole cell lysate
 Lane 2: 293T whole cell lysate
 Secondary
 Goat polyclonal to rabbit IgG at 1/15000 dilution
 Predicted band size: 13 kDa
 Observed band size: 13 kDa

Usage

For Research Use Only. Not for use in diagnostic or therapeutic procedures.