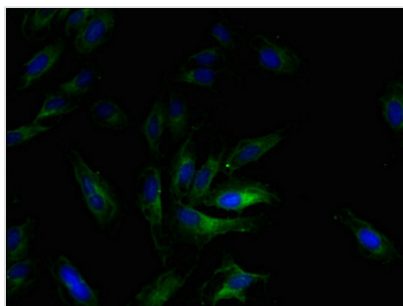




# Ccl2 Antibody

<b>Product Code</b>	CSB-PA09047A0Rb
<b>Storage</b>	Upon receipt, store at -20°C or -80°C. Avoid repeated freeze.
<b>Uniprot No.</b>	P10148
<b>Immunogen</b>	Recombinant Mouse C-C motif chemokine 2 protein (24-96AA)
<b>Raised In</b>	Rabbit
<b>Species Reactivity</b>	Mouse
<b>Tested Applications</b>	ELISA, IF; Recommended dilution: IF:1:50-1:200
<b>Form</b>	Liquid
<b>Conjugate</b>	Non-conjugated
<b>Storage Buffer</b>	Preservative: 0.03% Proclin 300 Constituents: 50% Glycerol, 0.01M PBS, PH 7.4
<b>Purification Method</b>	>95%, Protein G purified
<b>Isotype</b>	IgG
<b>Clonality</b>	Polyclonal
<b>Alias</b>	C-C motif chemokine 2 (Monocyte chemoattractant protein 1) (Monocyte chemotactic protein 1) (MCP-1) (Platelet-derived growth factor-inducible protein JE) (Small-inducible cytokine A2), Ccl2, Je Mcp1 Scya2
<b>Immunogen Species</b>	Mus musculus (Mouse)
<b>Research Area</b>	Immunology
<b>Target Names</b>	Ccl2

## Image



Immunofluorescent analysis of HeLa cells using CSB-PA09047A0Rb at dilution of 1:100 and Alexa Fluor 488-conjugated AffiniPure Goat Anti-Rabbit IgG(H+L)

## Usage

For Research Use Only. Not for use in diagnostic or therapeutic procedures.