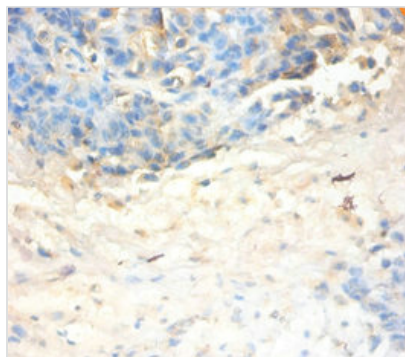




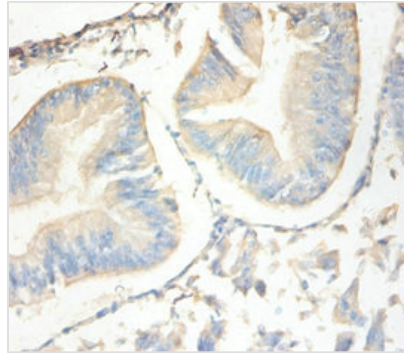
SLPI Antibody

Product Code	CSB-PA07154A0Rb
Storage	Upon receipt, store at -20°C or -80°C. Avoid repeated freeze.
Uniprot No.	P03973
Immunogen	Recombinant Human Antileukoproteinase protein (26-132AA)
Raised In	Rabbit
Species Reactivity	Human
Tested Applications	ELISA, IHC, IF; Recommended dilution: IHC:1:20-1:200, IF:1:50-1:200
Form	Liquid
Conjugate	Non-conjugated
Storage Buffer	Preservative: 0.03% Proclin 300 Constituents: 50% Glycerol, 0.01M PBS, PH 7.4
Purification Method	>95%, Protein G purified
Isotype	IgG
Clonality	Polyclonal
Alias	Antileukoproteinase (ALP) (BLPI) (HUSI-1) (Mucus proteinase inhibitor) (MPI) (Protease inhibitor WAP4) (Secretory leukocyte protease inhibitor) (Seminal proteinase inhibitor) (WAP four-disulfide core domain protein 4), SLPI, WAP4 WFDC4
Immunogen Species	Homo sapiens (Human)
Research Area	Immunology
Target Names	SLPI

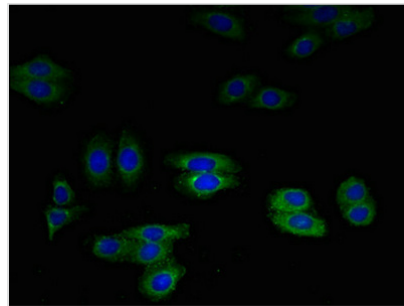
Image



Immunohistochemistry of paraffin-embedded human ovarian cancer using CSB-PA07154A0Rb at dilution of 1:100



Immunohistochemistry of paraffin-embedded human endometrial cancer using CSB-PA07154A0Rb at dilution of 1:100



Immunofluorescent analysis of HepG2 cells using CSB-PA07154A0Rb at dilution of 1:100 and Alexa Fluor 488-conjugated AffiniPure Goat Anti-Rabbit IgG(H+L)

Usage

For Research Use Only. Not for use in diagnostic or therapeutic procedures.