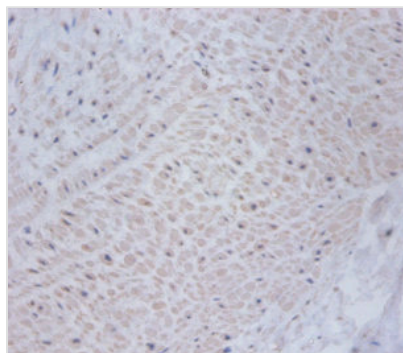




CSRP2 Antibody

Product Code	CSB-PA06937A0Rb
Storage	Upon receipt, store at -20°C or -80°C. Avoid repeated freeze.
Uniprot No.	Q16527
Immunogen	Recombinant Human Cysteine and glycine-rich protein 2 protein (2-193AA)
Raised In	Rabbit
Species Reactivity	Human
Tested Applications	ELISA, IHC; Recommended dilution: IHC:1:20-1:200
Form	Liquid
Conjugate	Non-conjugated
Storage Buffer	Preservative: 0.03% Proclin 300 Constituents: 50% Glycerol, 0.01M PBS, PH 7.4
Purification Method	>95%, Protein G purified
Isotype	IgG
Clonality	Polyclonal
Alias	Cysteine and glycine-rich protein 2 (Cysteine-rich protein 2) (CRP2) (LIM domain only protein 5) (LMO-5) (Smooth muscle cell LIM protein) (SmLIM), CSRP2, LMO5, SMLIM
Immunogen Species	Homo sapiens (Human)
Research Area	Epigenetics and Nuclear Signaling
Target Names	CSRP2

Image



Immunohistochemistry of paraffin-embedded human umbilical cord tissue using CSB-PA06937A0Rb at dilution of 1:100