



Recombinant Human DNA ligase 1 (LIG1)

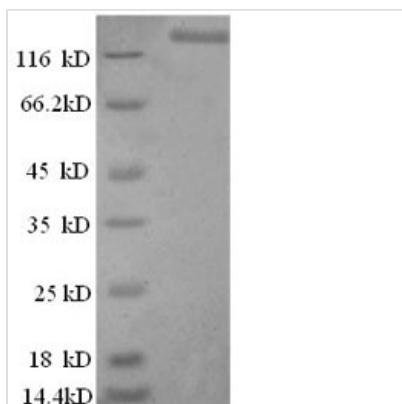
Product Code	CSB-EP012930HU
Relevance	DNA ligase that seals nicks in double-stranded DNA during DNA replication, DNA recombination and DNA repair.
Abbreviation	Recombinant Human LIG1 protein
Storage	The shelf life is related to many factors, storage state, buffer ingredients, storage temperature and the stability of the protein itself. Generally, the shelf life of liquid form is 6 months at -20°C/-80°C. The shelf life of lyophilized form is 12 months at -20°C/-80°C.
Uniprot No.	P18858
Alias	DNA ligase I Polydeoxyribonucleotide synthase [ATP] 1
Product Type	Recombinant Protein
Immunogen Species	Homo sapiens (Human)
Purity	≥ 90% as determined by SDS-PAGE.
Sequence	<p>MQRSIMSFFHPKKEGKAKKPEKEASNSSRETEPPPKAALKEWNGVVSESDSP VKRPGRKAARVLGSEGEEDALSPAKGQKPALDCSQVSPRPATSPENNAS LSDTSPMDSSPSGIPKRRTARKQLPKRTIQEVLEEQSEDEDREAKRKKEEEEE ETPKESLTEAEVATEKEGEDGDQPTTPPKPLKTSKAETPTESVSEPEVATKQE LQEEEEQTKPPRRAPKTLSSFFTPRKP AVKKEVKEE EPGAPGKEGAAEGLD PSGYNPAKNNYHPVEDACWKP GQKVPYLAVARTFEKIEEVSARLRMVETLSN LLRSVVALSPPDLLPVLYLSLNHLGPPQQGLELGVGDGVLLKAVAQATGRQLE SVRAEAAEKGDVGLVAENSRSTQRLMLPPPPLTASGVFSKFRDIARLTGSAST AKKIDIKGLFVACRHSEARFIARSLSGRLRLGLAEQSVLAALSQAVSLTPPGQE FPPAMVDAGKGKTAEARKTWLEEQGMILKQTFCEVPDLDRIPVLEHGLERLP EHCKLSPGIPLKPM LAHPTRGISEVLKRFE EAAFTCEYKYDGGQRAQIHALEGGE VKIFSRNQEDNTGKYPDIISRIPKIKLPSVTSFILDTEAVAWDREKKQIQPFQVLT TRKRKEVDASEIQVQVCLYAFDLIYLN GESLVREPLSRRRQLLRENFVETEGEF VFATSLDTKDIEQIAEFLEQSVKDSCEGLMVKTL D VDATYEIAKRSHNWLK LKK DYLDGVGDTLDLVVIGAYLGRGKRAGRYGGFLLASYDEDSEELQAICKLGTGF SDEELEHHQSLKALVLPSPRPYVRIDGAVIPDHWLDPSAVWEVKCADLSLSP I YPAARGLVDSDKGISLRFPRFIRVREDKQPEQATTSAQVACLYRKQSQIQNQQ GEDSGSDPEDTY</p>
Research Area	Cell Cycle
Source	E.coli
Target Names	LIG1
Expression Region	1-919aa
Notes	Repeated freezing and thawing is not recommended. Store working aliquots at 4°C for up to one week.
Tag Info	N-terminal GST-tagged



Mol. Weight 128.7kDa

Protein Length Full Length

Image



(Tris-Glycine gel) Discontinuous SDS-PAGE (reduced) with 5% enrichment gel and 15% separation gel.

Reconstitution

We recommend that this vial be briefly centrifuged prior to opening to bring the contents to the bottom. Please reconstitute protein in deionized sterile water to a concentration of 0.1-1.0 mg/mL. We recommend to add 5-50% of glycerol (final concentration) and aliquot for long-term storage at -20°C/-80°C. Our default final concentration of glycerol is 50%. Customers could use it as reference.

Shelf Life

The shelf life is related to many factors, storage state, buffer ingredients, storage temperature and the stability of the protein itself. Generally, the shelf life of liquid form is 6 months at -20°C/-80°C. The shelf life of lyophilized form is 12 months at -20°C/-80°C.