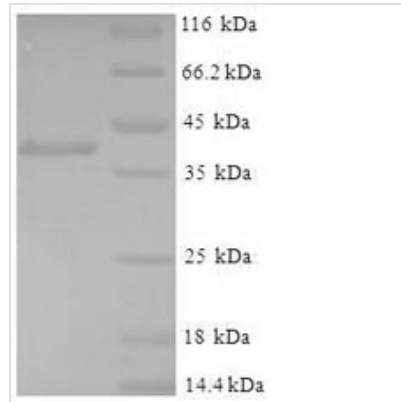




Recombinant Mouse Glutathione S-transferase P 1 (Gstp1)

Product Code	CSB-EP009989MO
Relevance	Conjugation of reduced glutathione to a wide number of exogenous and endogenous hydrophobic electrophiles. Can metabolize 1-chloro-2,4-dinitrobenzene. Regulates negatively CDK5 activity via p25/p35 translocation to prevent neurodegeneration .
Abbreviation	Recombinant Mouse Gstp1 protein
Storage	The shelf life is related to many factors, storage state, buffer ingredients, storage temperature and the stability of the protein itself. Generally, the shelf life of liquid form is 6 months at -20°C/-80°C. The shelf life of lyophilized form is 12 months at -20°C/-80°C.
Uniprot No.	P19157
Alias	GST YF-YFGST class-piGST-piBPreadipocyte growth factor
Product Type	Recombinant Protein
Immunogen Species	Mus musculus (Mouse)
Purity	≥ 90% as determined by SDS-PAGE.
Sequence	PPYTIVYFPVGRGRCEAMRMLLADQGGQSWKEEVVTIDTWMQGLLKPTCLYGQL PKFEDGDLTLYQSNAILRHLGRSLGLYGKNQREAAQMDMVNDGVEDLRGKYV TLIYTNYENGKNDYVKALPGHLKPFETLLSQNQQGGKAFIVGDQISFADYNLLDL LLIHQVLPAGCLDNFPLLSAYVARLSARPKIKAFLLSSPEHVNRPINGNGKQ
Research Area	Others
Source	E.coli
Target Names	Gstp1
Expression Region	2-210aa
Notes	Repeated freezing and thawing is not recommended. Store working aliquots at 4°C for up to one week.
Tag Info	N-terminal 6xHis-SUMO-tagged
Mol. Weight	39.5kDa
Protein Length	Full Length of Mature Protein
Image	



(Tris-Glycine gel) Discontinuous SDS-PAGE (reduced) with 5% enrichment gel and 15% separation gel.

Reconstitution

We recommend that this vial be briefly centrifuged prior to opening to bring the contents to the bottom. Please reconstitute protein in deionized sterile water to a concentration of 0.1-1.0 mg/mL. We recommend to add 5-50% of glycerol (final concentration) and aliquot for long-term storage at $-20^{\circ}\text{C}/-80^{\circ}\text{C}$. Our default final concentration of glycerol is 50%. Customers could use it as reference.

Shelf Life

The shelf life is related to many factors, storage state, buffer ingredients, storage temperature and the stability of the protein itself. Generally, the shelf life of liquid form is 6 months at $-20^{\circ}\text{C}/-80^{\circ}\text{C}$. The shelf life of lyophilized form is 12 months at $-20^{\circ}\text{C}/-80^{\circ}\text{C}$.