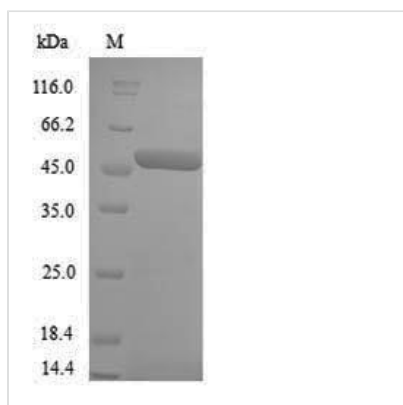




Recombinant *Acetobacter pasteurianus* Modification methylase ApaLI (apaLIM)

Product Code	CSB-YP523812AVW
Relevance	This methylase recognizes the double-stranded sequence GTGCAC, causes specific methylation on C-? on both strands, and protects the DNA from cleavage by the ApaLI endonuclease.
Abbreviation	Recombinant <i>Acetobacter pasteurianus</i> apaLIM protein
Storage	The shelf life is related to many factors, storage state, buffer ingredients, storage temperature and the stability of the protein itself. Generally, the shelf life of liquid form is 6 months at -20°C/-80°C. The shelf life of lyophilized form is 12 months at -20°C/-80°C.
Uniprot No.	O52702
Alias	Cytosine-specific methyltransferase ApaLI
Product Type	Recombinant Protein
Immunogen Species	<i>Acetobacter pasteurianus</i> (<i>Acetobacter turbidans</i>)
Purity	≥ 90% as determined by SDS-PAGE.
Sequence	MNKDEVVVSFLFAGAGGFSSGFSQAGLKPLFGAEINADACQTYQENVGSPCHQ LDLSTVDPSHIEMLTGGKRPFVVGPPCQGFSTAGPRNFADPRNLLIFNYLNI VERLSRWLIFENVEGLLTSGGGRDLARLVREFVDMGYSVRLQKVNLAAYGV PQTRKRVLIIGNRLGIDFQFPEELYSFDSGKAKKASGKPLAPSLAEAVAGLGPA ASDKDALVPYASSEPVNAFDARMRAGNRVEVVTHHVRVEAAERMQVELLKPG QTMKDLPELWHESYRRRANRRVSDGTPTEKRGGAPSGIKRLHGNLQSLTIT GPAAREFIHPTEHRPLTIRECARIQTFDPKYRWVGNNASVIQQIGNAVPPLAAE RLAKHLRDIDGSFGADTRPAGAMSAKLLGFVLTEALGMSPALKSTEALLAEMH QGGFVF
Research Area	Microbiology
Source	Yeast
Target Names	apaLIM
Protein Names	Recommended name: Modification methylase ApaLI Short name= M.ApaLI EC= 2.1.1.37 Alternative name(s): Cytosine-specific methyltransferase ApaLI
Expression Region	1-429aa
Notes	Repeated freezing and thawing is not recommended. Store working aliquots at 4°C for up to one week.
Tag Info	N-terminal 6xHis-tagged
Mol. Weight	48.5kDa
Protein Length	Full Length
Image	



(Tris-Glycine gel) Discontinuous SDS-PAGE (reduced) with 5% enrichment gel and 15% separation gel.

Reconstitution

We recommend that this vial be briefly centrifuged prior to opening to bring the contents to the bottom. Please reconstitute protein in deionized sterile water to a concentration of 0.1-1.0 mg/mL. We recommend to add 5-50% of glycerol (final concentration) and aliquot for long-term storage at -20°C/-80°C. Our default final concentration of glycerol is 50%. Customers could use it as reference.

Shelf Life

The shelf life is related to many factors, storage state, buffer ingredients, storage temperature and the stability of the protein itself. Generally, the shelf life of liquid form is 6 months at -20°C/-80°C. The shelf life of lyophilized form is 12 months at -20°C/-80°C.