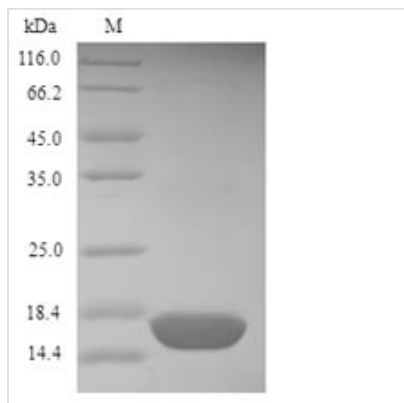




Recombinant Mercurialis annua Profilin

Product Code	CSB-YP525079MQZ
Relevance	Binds to actin and affects the structure of the cytoskeleton. At high concentrations, profilin prevents the polymerization of actin, whereas it enhances it at low concentrations. By binding to PIP2, it inhibits the formation of IP3 and DG
Abbreviation	Recombinant Mercurialis annua Profilin protein
Storage	The shelf life is related to many factors, storage state, buffer ingredients, storage temperature and the stability of the protein itself. Generally, the shelf life of liquid form is 6 months at -20°C/-80°C. The shelf life of lyophilized form is 12 months at -20°C/-80°C.
Uniprot No.	O49894
Alias	Pollen allergen Mer a 1 Allergen: Mer a 1
Product Type	Recombinant Protein
Immunogen Species	Mercurialis annua (Annual mercury)
Purity	≥ 90% as determined by SDS-PAGE.
Sequence	MSWQTYVDDHLMCDIDGQGQHLLAAASIVGHDGSIWAQSASFQPKPEEITGIM KDFDEPGHLAPTGLYIAGTKYMVIIQGEGS GAVIRGKKGSGGITIKKTGQALVFGIY E E P V T P G Q C N M V V E R L G D Y L I E Q G M
Research Area	Allergen
Source	Yeast
Protein Names	Recommended name: Profilin Alternative name(s): Pollen allergen Mer a 1 Allergen= Mer a 1
Expression Region	1-133aa
Notes	Repeated freezing and thawing is not recommended. Store working aliquots at 4°C for up to one week.
Tag Info	N-terminal 6xHis-tagged
Mol. Weight	16.3kDa
Protein Length	Full Length
Image	



(Tris-Glycine gel) Discontinuous SDS-PAGE (reduced) with 5% enrichment gel and 15% separation gel.

Reconstitution

We recommend that this vial be briefly centrifuged prior to opening to bring the contents to the bottom. Please reconstitute protein in deionized sterile water to a concentration of 0.1-1.0 mg/mL. We recommend to add 5-50% of glycerol (final concentration) and aliquot for long-term storage at -20°C/-80°C. Our default final concentration of glycerol is 50%. Customers could use it as reference.

Shelf Life

The shelf life is related to many factors, storage state, buffer ingredients, storage temperature and the stability of the protein itself. Generally, the shelf life of liquid form is 6 months at -20°C/-80°C. The shelf life of lyophilized form is 12 months at -20°C/-80°C.