



Recombinant Human Vascular cell adhesion protein 1 (VCAM1), partial

Product Code	CSB-YP025809HU
Relevance	Important in cell-cell recognition. Appears to function in leukocyte-endothelial cell adhesion. Interacts with integrin alpha-4/beta-1 (ITGA4/ITGB1) on leukocytes, and mediates both adhesion and signal transduction. The VCAM1/ITGA4/ITGB1 interaction may play a pathophysiologic role both in immune responses and in leukocyte migration to sites of inflammation.
Abbreviation	Recombinant Human VCAM1 protein, partial
Storage	The shelf life is related to many factors, storage state, buffer ingredients, storage temperature and the stability of the protein itself. Generally, the shelf life of liquid form is 6 months at -20°C/-80°C. The shelf life of lyophilized form is 12 months at -20°C/-80°C.
Uniprot No.	P19320
Alias	INCAM-100; CD106
Product Type	Recombinant Protein
Immunogen Species	Homo sapiens (Human)
Purity	Greater than 90% as determined by SDS-PAGE.
Sequence	FKIETTPESRYLAQIGDSVSLTCSTTGCESPFFSWRTQIDSPLNGKVTNEGTTSTLTMNPVSFGNEHSYLCTATCESRKLEKGIQVEIYSFPKDPEIHLSGPLEAGKPI TVKCSVADVYPFDRLEIDLLKGDHLMKSQEFLEDADRKSLETKSLEVTFTPVIE DIGKVLVCRAKLHIDEMDSVPTVRQAVKELQVYISPKNTVISVNPSTKLQEGGS VTMTCSSEGLPAPEIFWSKKLDNGNLQHLSGNATLTLIAMRMEDSGIYVCEGV NLIGKNRKEVELIVQEKPFTVEISPGPRIAAQIGDSVMLTCSVMGCESPSFSWR TQIDSPLSGKVRSEGTNSTLTLSPVSFENEHSYLCTVTCGHKKLEKGIQVELYS FPRDPEIEMSGGLVNGSSVTVSKVPSVYPLDRLEIELLKGETILENIEFLEDTD MKSLENKSLEMTFIPTIEDTGKALVCQAKLHIDDMEFEPKQRQSTQTLVNVAP RDTTVLVSPSSILEEGSSVNMTCLSQGFAPAKILWSRQLPNGELQPLSENATLT LISTKMEDSGVYLCEGINQAGRSRKEVELIIQVTPKDIKLTAFPSVKEGDTVII SCTCGNVPETWILKKAETGDTVLSIDGAYTIRKAQLKDAGVYECESKNKVG SQLRSLTLDVQGRENNKDYFSPE
Research Area	Cell Adhesion
Source	Yeast
Target Names	VCAM1
Protein Names	Recommended name: Vascular cell adhesion protein 1 Short name= V-CAM 1 Short name= VCAM-1 Alternative name(s): INCAM-100 CD_antigen= CD106
Expression Region	25-698aa
Notes	Repeated freezing and thawing is not recommended. Store working aliquots at 4°C for up to one week.

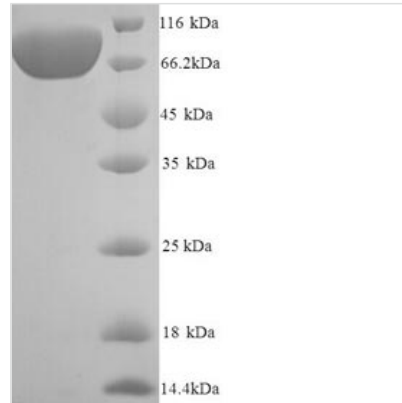


Tag Info N-terminal 6xHis-tagged

Mol. Weight 76.2kDa

Protein Length Extracellular Domain

Image



(Tris-Glycine gel) Discontinuous SDS-PAGE (reduced) with 5% enrichment gel and 15% separation gel.

Reconstitution

We recommend that this vial be briefly centrifuged prior to opening to bring the contents to the bottom. Please reconstitute protein in deionized sterile water to a concentration of 0.1-1.0 mg/mL. We recommend to add 5-50% of glycerol (final concentration) and aliquot for long-term storage at -20°C/-80°C. Our default final concentration of glycerol is 50%. Customers could use it as reference.

Shelf Life

The shelf life is related to many factors, storage state, buffer ingredients, storage temperature and the stability of the protein itself. Generally, the shelf life of liquid form is 6 months at -20°C/-80°C. The shelf life of lyophilized form is 12 months at -20°C/-80°C.