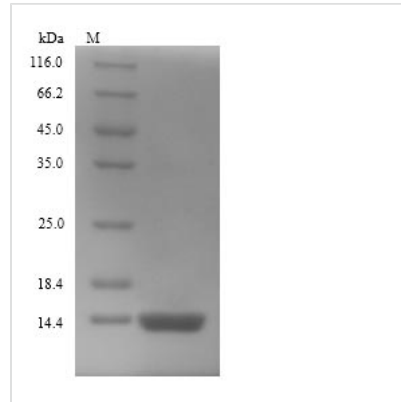




Recombinant Escherichia coli Thiosulfate sulfurtransferase GlpE (glpE)

Product Code	CSB-YP533026ENP
Relevance	Catalyzes, although with low efficiency, the sulfur transfer reaction from thiosulfate to cyanide.
Abbreviation	Recombinant E.coli glpE protein
Storage	The shelf life is related to many factors, storage state, buffer ingredients, storage temperature and the stability of the protein itself. Generally, the shelf life of liquid form is 6 months at -20°C/-80°C. The shelf life of lyophilized form is 12 months at -20°C/-80°C.
Uniprot No.	B1IP41
Product Type	Recombinant Protein
Immunogen Species	Escherichia coli (strain ATCC 8739 / DSM 1576 / Crooks)
Purity	≥ 90% as determined by SDS-PAGE.
Sequence	MDQFECINVADAHQKLQEKEAVLVDIRDPQSFAMGHAVQAFHLTNDTLGAFM RDNDFDTPVMVMCYHGNSSKGAAQYLLQQGYDVVYSIDGGFEVWQRQFP AEVAYGA
Research Area	Microbiology
Source	Yeast
Target Names	glpE
Protein Names	Recommended name: Thiosulfate sulfurtransferase glpE EC= 2.8.1.1
Expression Region	1-108aa
Notes	Repeated freezing and thawing is not recommended. Store working aliquots at 4°C for up to one week.
Tag Info	N-terminal 6xHis-tagged
Mol. Weight	14.1 kDa
Protein Length	Full Length
Image	



(Tris-Glycine gel) Discontinuous SDS-PAGE (reduced) with 5% enrichment gel and 15% separation gel.

Reconstitution

We recommend that this vial be briefly centrifuged prior to opening to bring the contents to the bottom. Please reconstitute protein in deionized sterile water to a concentration of 0.1-1.0 mg/mL. We recommend to add 5-50% of glycerol (final concentration) and aliquot for long-term storage at -20°C/-80°C. Our default final concentration of glycerol is 50%. Customers could use it as reference.

Shelf Life

The shelf life is related to many factors, storage state, buffer ingredients, storage temperature and the stability of the protein itself. Generally, the shelf life of liquid form is 6 months at -20°C/-80°C. The shelf life of lyophilized form is 12 months at -20°C/-80°C.