

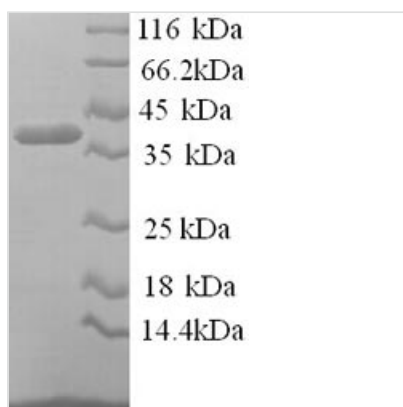


Recombinant Human Pregnancy zone protein (PZP), partial

| | |
|--------------------------|---|
| Product Code | CSB-EP019131HU |
| Relevance | Is able to inhibit all four classes of proteinases by a unique 'trapping' mechanism. This protein has a peptide stretch, called the 'bait region' which contains specific cleavage sites for different proteinases. When a proteinase cleaves the bait region, a conformational change is induced in the protein which traps the proteinase. The entrapped enzyme rains active against low molecular weight substrates (activity against high molecular weight substrates is greatly reduced). Following cleavage in the bait region a thioester bond is hydrolyzed and mediates the covalent binding of the protein to the proteinase. |
| Abbreviation | Recombinant Human PZP protein, partial |
| Storage | The shelf life is related to many factors, storage state, buffer ingredients, storage temperature and the stability of the protein itself. Generally, the shelf life of liquid form is 6 months at -20°C/-80°C. The shelf life of lyophilized form is 12 months at -20°C/-80°C. |
| Uniprot No. | P20742 |
| Alias | C3 and PZP-like alpha-2-macroglobulin domain-containing protein 6 |
| Product Type | Recombinant Protein |
| Immunogen Species | Homo sapiens (Human) |
| Purity | ≥ 90% as determined by SDS-PAGE. |
| Sequence | MKPEAELSVSSVYNLLTVKDLTNFPDNDVQEQEEEQGHCPRPFFIHNGAIYVPL SSNEADIYSFLKGMGLKVFTNSKIRKPKSCSVIPSVSAGAVGQGYGAGLGVV ERPYPQLGTYNVIPLNNEQSSGPVETVRSYFPETWIWELVAVNSSGVAEVB VTVPDTITTEWKAGAFCLSEDAGLGISSTASLRAFQPFVVELTMPYSVIRGEVFT LKATVLNLYLPKCIRAEGIEQEKFSSMTCASGANVSEQLSLKLPNNVVKESARA SFSVLGDILGSAMQNIQNLLQMPYGCGEQNMVLFAPNIYVLNLYLNETQQLTQEI KAKAVGYLITGYQRQLNYKHQDGSYSTFG |
| Research Area | Neuroscience |
| Source | E.coli |
| Target Names | PZP |
| Expression Region | 472-821aa |
| Notes | Repeated freezing and thawing is not recommended. Store working aliquots at 4°C for up to one week. |
| Tag Info | N-terminal 6xHis-tagged |
| Mol. Weight | 42.3kDa |
| Protein Length | Partial of Isoform 2 |



Image



(Tris-Glycine gel) Discontinuous SDS-PAGE (reduced) with 5% enrichment gel and 15% separation gel.

Reconstitution

We recommend that this vial be briefly centrifuged prior to opening to bring the contents to the bottom. Please reconstitute protein in deionized sterile water to a concentration of 0.1-1.0 mg/mL. We recommend to add 5-50% of glycerol (final concentration) and aliquot for long-term storage at -20°C/-80°C. Our default final concentration of glycerol is 50%. Customers could use it as reference.

Shelf Life

The shelf life is related to many factors, storage state, buffer ingredients, storage temperature and the stability of the protein itself. Generally, the shelf life of liquid form is 6 months at -20°C/-80°C. The shelf life of lyophilized form is 12 months at -20°C/-80°C.