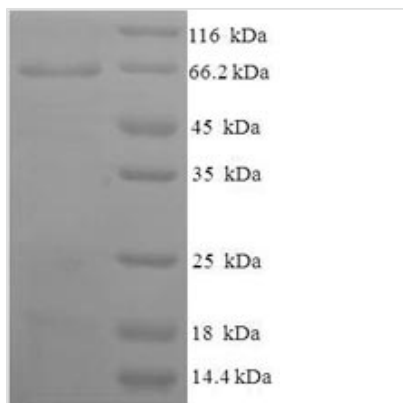


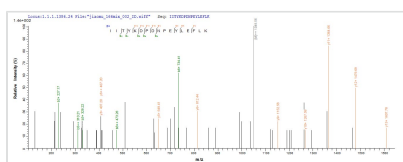


Recombinant Human Atrial natriuretic peptide receptor 1 (NPR1), partial

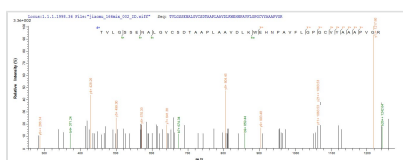
Product Code	CSB-EP016023HU
Relevance	Receptor for the atrial natriuretic peptide NPPA/ANP and the brain natriuretic peptide NPPB/BNP which are potent vasoactive hormones playing a key role in cardiovascular homeostasis. Has guanylate cyclase activity upon binding of the ligand.
Abbreviation	Recombinant Human NPR1 protein, partial
Storage	The shelf life is related to many factors, storage state, buffer ingredients, storage temperature and the stability of the protein itself. Generally, the shelf life of liquid form is 6 months at -20°C/-80°C. The shelf life of lyophilized form is 12 months at -20°C/-80°C.
Uniprot No.	P16066
Alias	Atrial natriuretic peptide receptor type A ;ANP-A ;ANPR-A ;NPR-AGuanylate cyclase A ;GC-A
Product Type	Recombinant Protein
Immunogen Species	Homo sapiens (Human)
Purity	≥ 90% as determined by SDS-PAGE.
Sequence	GNLTVAVVLPLANTSYPWSWARVGPVELALAQVKARPDLLPGWTVRTVLGS SENALGVCSDTAAPLAAVDLKWEHNPAVFLGPGCVYAAPVGRFTAHWVRVPL LTAGAPALGFGVKDEYALTTTRAGPSYAKLGDFVAALHRRLGWERQALMLYAY RPGDEEHCFLLVEGLFMRVRDRLNITVDHLEFAEDDLSHYTRLLRRTMPRKGRV IYICSSPDAFRTLMLLALEAGLCGEDYVFFHLDIFGQSLQGGQGPAPRRPWER GDGQDVSARQAFQAAKIITYKDPDNPEYLEFLKQLKHLAYEQFNFTMEDGLVN TIPASFHDGLLLYIQAVTETLAHGGTVDGENITQRMWNRSFQGVGTGYLKIDSS GDRETFSLWMDPENGAFRVVLNYNGTSQELVAVSGRKLNWPLGYPPPDP KCGFDNEDPACNQDHLSTLE
Research Area	Cardiovascular
Source	E.coli
Target Names	NPR1
Expression Region	33-473aa
Notes	Repeated freezing and thawing is not recommended. Store working aliquots at 4°C for up to one week.
Tag Info	N-terminal 6xHis-SUMO-tagged
Mol. Weight	64.9kDa
Protein Length	Extracellular Domain
Image	



(Tris-Glycine gel) Discontinuous SDS-PAGE (reduced) with 5% enrichment gel and 15% separation gel.



Based on the SEQUEST from database of E.coli host and target protein, the LC-MS/MS Analysis result of CSB-EP016023HU could indicate that this peptide derived from E.coli-expressed Homo sapiens (Human) NPR1.



Based on the SEQUEST from database of E.coli host and target protein, the LC-MS/MS Analysis result of CSB-EP016023HU could indicate that this peptide derived from E.coli-expressed Homo sapiens (Human) NPR1.

Reconstitution

We recommend that this vial be briefly centrifuged prior to opening to bring the contents to the bottom. Please reconstitute protein in deionized sterile water to a concentration of 0.1-1.0 mg/mL. We recommend to add 5-50% of glycerol (final concentration) and aliquot for long-term storage at -20°C/-80°C. Our default final concentration of glycerol is 50%. Customers could use it as reference.

Shelf Life

The shelf life is related to many factors, storage state, buffer ingredients, storage temperature and the stability of the protein itself.

Generally, the shelf life of liquid form is 6 months at -20°C/-80°C. The shelf life of lyophilized form is 12 months at -20°C/-80°C.