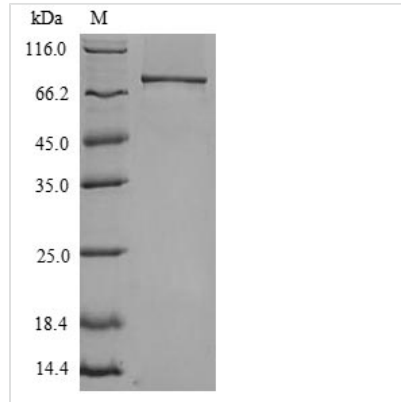




# Recombinant Mouse Toll-like receptor 4 (Tlr4), partial

<b>Product Code</b>	CSB-YP023603MO
<b>Relevance</b>	Cooperates with LY96 and CD14 to mediate the innate immune response to bacterial lipopolysaccharide (LPS). Acts via MYD88, TIRAP and TRAF6, leading to NF-kappa-B activation, cytokine secretion and the inflammatory response. Also involved in LPS-independent inflammatory responses triggered by free fatty acids, such as palmitate. In complex with TLR6, promotes sterile inflammation in monocytes/macrophages in response to oxidized low-density lipoprotein (oxLDL) or amyloid-beta 42. In this context, the initial signal is provided by oxLDL- or amyloid-beta 42-binding to CD36. This event induces the formation of a heterodimer of TLR4 and TLR6, which is rapidly internalized and triggers inflammatory response, leading to the NF-kappa-B-dependent production of CXCL1, CXCL2 and CCL9 cytokines, via MYD88 signaling pathway, and CCL5 cytokine, via TICAM1 signaling pathway, as well as IL1B secretion. Binds electronegative LDL (LDL-) and mediates the cytokine release induced by LDL
<b>Abbreviation</b>	Recombinant Mouse Tlr4 protein, partial
<b>Storage</b>	The shelf life is related to many factors, storage state, buffer ingredients, storage temperature and the stability of the protein itself. Generally, the shelf life of liquid form is 6 months at -20°C/-80°C. The shelf life of lyophilized form is 12 months at -20°C/-80°C.
<b>Uniprot No.</b>	Q9QUK6
<b>Product Type</b>	Recombinant Proteins
<b>Immunogen Species</b>	Mus musculus (Mouse)
<b>Purity</b>	≥ 90% as determined by SDS-PAGE.
<b>Research Area</b>	Immunology
<b>Source</b>	Yeast
<b>Target Names</b>	Tlr4
<b>Protein Names</b>	Recommended name: Toll-like receptor 4 Alternative name(s): CD_antigen=CD284
<b>Expression Region</b>	26-638aa
<b>Notes</b>	Repeated freezing and thawing is not recommended. Store working aliquots at 4°C for up to one week.
<b>Tag Info</b>	Tag type will be determined during the manufacturing process.
<b>Mol. Weight</b>	71.5kDa
<b>Protein Length</b>	Partial
<b>Image</b>	



(Tris-Glycine gel) Discontinuous SDS-PAGE (reduced) with 5% enrichment gel and 15% separation gel.

### Shelf Life

The shelf life is related to many factors, storage state, buffer ingredients, storage temperature and the stability of the protein itself.

Generally, the shelf life of liquid form is 6 months at -20°C/-80°C. The shelf life of lyophilized form is 12 months at -20°C/-80°C.